



Holly Days

WHOLESALE NURSERY & LANDSCAPE SUPPLIES

Save a digital copy! Just take a photo & bookmark this link. >>>



www.HOLLYDAYSNURSERY.com

TREES • SHRUBS • EVERGREENS • ANNUALS
PERENNIALS • BULK MATERIALS • SUPPLIES

1201 Horsham Rd., Ambler, PA

Se Habla Español

215.283.3228 • sales@hollydaysnursery.com

WE DELIVER!



1201 Horsham Rd., Ambler, PA 19002

Send us your job plant list!

We are always happy to help.

danielle@hollydaysnursery.com

torrey@hollydaysnursery.com

paul@hollydaysnursery.com

CONNECT WITH US        ON SOCIAL MEDIA



To all friends, customers, & plant people,

We are so excited to start a new season here at Holly Days Nursery. The 2021 year will mark our 27th season here in Horsham, PA. We look forward to working with you and helping you with all your plant and landscape needs. Last year proved to be incredibly challenging for all of us, both professionally and personally. We appreciate you, our customers, for working with us during these crazy and difficult times. The pandemic of 2020—2021 has forced our industry to operate and function very differently. We are working to streamline our sales process. We're asking all regular customers to open a 'credit card account' or establish 'on account' terms. All receipts will be E-mailed to you at the time of pickup. Feel free to call and email your orders in and we will do our best to have your order ready when you arrive. Please talk to your salesperson to get the process started for your company.

We are all feeling the effects of labor issues and plant shortages. Here at Holly Days, we are doing our absolute best to stay ahead of it and serve you quickly and efficiently. Things are changing quickly and often. Speaking of change—we recently completed a massive restructure of our perennial and annual areas. Both of these areas will be packed full of the plants you need! We will have a huge selection of flowering annuals, perennials, tropicals, and other seasonal plants. This area will allow for larger quantities and better selection. Please stop by and check it out! If you do not see it... ask any Holly Days personnel!

We are here to work with you, to help you, and to provide a great delivery service to your yards or job sites. We provide direct shipping of plant material, mulch, soil, & stone. We have a HUGE selection of bulk products for pick up or delivery. We are stepping up our game on blended soils and we always have your traditional mulches, soils, and stones in stock. Thank you for being some of the best customers in this industry, we would not be here without you. Best wishes for continued success and a vibrant year of new projects.



*Take a photo
on your phone!*

**Check out current
availability!**

>>>

S E R V I C E
YOU NEED IT... WE GOT IT.
Landscape Plants & Supply
All Day, Everyday!

Phone: 215.283.3228

Fax: 215.283.3229

sales@hollydaysnursery.com

www.hollydaysnursery.com

NURSERY STAFF

Torrey Rose
John Rose
Danielle Goodson
Paul Faulkner
Tom Hartman
Tammey Roberts
Tim Bisset
Kennedy Betts

WHOLESALE HOURS

Monday—Friday from 7am—4pm & Saturday from 8am—2pm
WE LOAD BULK MATERIALS SEVEN DAYS A WEEK!

TERMS OF SALE

All prices listed herein are subject to change without notice.

All Sales are C.O.D., Visa, or Mastercard, unless you have established credit with Holly Days Nursery. All established credit accounts are Net 30 days and will be charged a monthly interest charge of 1.5% on past due balances. All accounts must be paid in full by the year's end. We are not in the banking or the collection business, so please send payments promptly.

***Please feel free to shop our nursery along with your customers,
but do not send them on their own.***

SERVICE INFORMATION — WE ARE SERVICE!

Just call, fax, or e-mail your order, to get the material you want, when you need it. We are usually able to meet your delivery needs within 24 hours or sooner. Delivery fees start at \$25.00 for local deliveries. Please allow 24—48 hours digging time on large orders. We will do our best to supply you with the finest material available. Upon sale of material, it becomes yours and your responsibility. We have no control after plants leave our nursery, hence we can not guarantee any material after it leaves our yard. We deliver bulk materials 6 days a week. We deliver plants Monday—Friday.

***IF YOU DO NOT SEE AN ITEM YOU ARE INTERESTED IN,
PLEASE GIVE US A CALL. 215.283.3228.
LARGE ORDERS WELCOME!***

Table of Contents

Index of Plant Names 1

TREES & SHRUBS

Listed by Botanical Names 1—35
Annuals 36
Grasses 36
Ground Covers 13
Perennials 37
Vines 34

LAWN CARE

Grass seed & Fertilizer / Erosion control straw 41

LANDSCAPING SUPPLIES

Gator Bags, Soaker Hose, Tree Stakes,
Landscape Edging, Landscape Fabric,
Sod Staples, String, Soaker Hose 45
Super Sand, Gator Dust 45

BULK MULCH & SOIL 43

SOIL, MULCH & STONE Coverage Table 48

STONE

Bulk Stone 44
Belgium Block 44
Path & Wallstone 46
Palletized Stone 46
Boulders 46

Ground Cover Spacing Table 48

INDEX OF PLANTS

(Common names)

A	Abelia	1
	Andromeda—Pieris	24
	Arborvitae—Thuja	32
	Aucuba	3
	Azalea	3
B	Bamboo	3
	Bald Cypress—Taxodium	31
	Barberry—Berberis	04
	Bayberry—Myrica	21
	Beautyberry—Callicarpa	6
	Beech—European Beech	12
	Birch—Betula	4
	Black gum—Nyssa	21
	Bluebeard—Caryopteris	6
	Boxwood—Buxus	5
	Butterfly Bush—Buddleia	4
C	Camellia	6
	Cedar—Cedrus	6
	Cherry—Prunus	25
	Chokeberry—Aronia	3
	Cotoneaster	10
	Crabapple—Malus	21
	Crape Myrtle—Lagerstroemia	18
	Cryptomeria	10
	Cypress—Chamaecyparis	8
	Cypress, Leyland—Cupressocyparis	10
D	Dawn Redwood—Metasequoia	21
	Deutzia	11
	Dogwood—Cornus	9
E	Elderberry—Sambucus	29
	Elm—Ulmus	33
	Enkianthus	11
	Euonymus	11
F	False-holly—Osmanthus	22
	Filbert—Corylus	9
	Firethorn—Pyracantha	26
	Forsythia	12
	Fothergilla	12
G	Ginkgo	13
	Grape Holly—Mahonia	20
H	Hawthorne—Crataegus	10
	Hemlock—Tsuga	33
	Heavenly Bamboo—Nandina	21
	Himalayan Sweet Box—Sarcococca	29
	Holly—Ilex	15
	Honeylocust—Gleditsia	13
	Hornbeam—Carpinus	6
	Hydrangea	14

J	Japanese Snowbell—Styrax	30
	Japanese Plum Yew	7
	Juniper—Juniperus	17
K	Katsura—Cercidiphyllum	7
L	Laurel, Cherry—Prunus	25
	Leucothoe	19
	Lilac—Syringa	30
	Linden—Tilia	33
	Locust—Gleditsia	13
M	Magnolia	20
	Maple—Acer	1
	Mountain Laurel—Kalmia	18
	Ninebark—Physocarpus	22
N	Oak—Quercus	27
O	Pear—Pyrus	27
P	Perennials	37
	Photinia	22
	Pieris	24
	Pine—Pinus	24
	Plane Tree—Platanus	25
	Plum—Prunus	26
	Potentilla	25
	Privet—Ligustrum	19
R	Redbud—Cercis	7
	Rhododendron	27
	Rose—Rosa	28
	Rose-of-Sharon—Hibiscus	14
S	Russian Cedar—Microbiota	21
	Serviceberry—Amelanchier	2
	Skimmia	29
	Smoke Tree—Cotinus	10
	Sourwood—Oxydendrum	22
	Spice Bush—Lindera	19
	Spiraea	29
	Spruce—Picea	23
	St. Johnswort—Hypericum	15
	Stewartia	30
	Summersweet—Clethra	8
	Sweetshrub—Carolina Spicebush	6
	Sweetspire—Itea	17
	Sweet Gum—Liquidambar	19
U	Sycamore—Platanus	25
V	Umbrella Pine—Sciadopitys	29
W	Viburnum	33
	Weigela	35
	Willow—Salix	28
Y	Witchhazel—Hamamelis	13
	Yew—Taxus	31
Z	Yucca	35
	Zelkova	35

Trees & Shrubs

■ ABELIA

- **Abelia 'Edward Goucher'**

Glossy Abelia

Semi-evergreen shrub with lavender-pink flowers on arching branches. Grows 5' high x 5' wide. Sun to partial shade.

- **Abelia x grandiflora 'Little Richard'**

Semi-evergreen shrub with white flowers on arching branches. Grows 3' high x 3' wide. Sun to partial shade.

3 gal

\$23.00

■ ACER

Acer palmatum—'Bloodgood', 'Burgundy Lace', 'Seiryu', 'Emperor I', 'Suminagashi'

Maple

Japanese Maple

Deciduous small tree that matures at 15—20'. Each variety has its own characteristics.

	5—6', 10 gal	\$175.00	<i>Home Grown</i>
<i>Specimen trees</i>	6—7', 15 gal, B&B	\$285.00	
<i>priced individually.</i>	7—8' B&B	\$315—375.00	
	8—10' B&B	\$425—575.00	<i>Come to pick your own</i>

Acer palmatum dissectum—'Crimson Queen', 'Red Dragon', 'Tamukeyama' (GOLD MEDAL WINNER), 'Viridis'—(Green variety)

Laceleaf Japanese Maple

Small tree that grows 6—10'. A deep red or green foliage that holds well in the summer. Offers a brilliant scarlet fall color.

	24—30"	\$125.00	<i>Home Grown</i>
<i>*Landscape SPECIAL*</i>	30—36"	\$195.00	<i>Home Grown</i>
	36—42"	\$275.00	
	3—4'	\$325.00	
	4—5' & Larger	\$425.00 & up	

We also stock:

'Sango Kaku', 'Full Moon', 'Pixie', 'Fireglow'

Japanese Maples

■ ACER

Maple

Acer griseum (GOLD MEDAL WINNER)

Paperbark Maple

A small deciduous tree that matures at 20—25' tall x 20' wide. Brilliant red fall color. Winter interest with exfoliating bark.

1½—2", 15 gal	\$215.00	*Multi or single stem
2—2½"	\$305.00	
2½—3"	\$395.00	

Acer platanoides 'Crimson King', 'Crimson Sentry', 'Royal Red'

Crimson King Maple

Deciduous tree with large, dark red-purple foliage. Matures at 50' tall x 30' wide.

½—2"	\$195.00
2—2½"	\$225.00
2½—3"	\$275.00

Acer rubrum—'October Glory', 'Red Sunset'

Red Maple

Round-headed deciduous tree with dark green 4" leaves. Leaves are grayish white beneath and turn bright red in the fall. Makes an excellent shade, specimen, and street tree. Matures to 45' tall x 30' wide.

1½, 15 gal	\$135.00
2—2½"	\$215.00
2½—3"	\$245.00

Acer saccharum 'Green Mountain'

Sugar Maple

Fast growing tree with a dense crown. Thick leathery leaves resist drought and leaf tatter. Great orange-yellow fall color. Matures at 50'.

1½—2", 15 gal	\$195.00	<i>Limited</i>
2—2½"	\$230.00	
2½—3"	\$295.00	

■ AESCULUS

Buckeye

Aesculus x carnea 'Briotti'

Ruby Red Horsechestnut

Slow growing, round, dense shade tree. Use as specimen. Matures at 35—45'.

2—2½"	\$265.00
2½—3"	\$315.00

Aesculus parviflora (GOLD MEDAL WINNER)

Bottlebrush Buckeye

Spreading, mound shaped. Use as specimen. Matures at 10' x 10'.

5 gal	\$45.00
3—4'	\$95.00

■ AMELANCHIER

Serviceberry

Amelanchier grandiflora 'Autumn Brilliance'

Serviceberry

Upright, vase-shaped, small deciduous tree that is multi-stemmed in habit. Slow grower. Matures 18—25' tall and wide. Bird attracting fruit.

15 gal	\$135.00
6—7' multi	\$175.00
7—8' multi	\$195.00
8—10' multi / 2—2½"	\$235.00

■ ARONIA

Aronia arbutifolia 'Brilliantissima' (GOLD MEDAL WINNER)

An upright growing native, deciduous plant. Matures at 6–10' high x 5' wide. White flowers in May and berries in fall. Tolerates wet soil.

Chokeberry
Red Chokeberry

3 gal	\$23.00
5 gal	\$30.00
7 gal	\$55.00

■ AUCUBA

Aucuba japonica, 'Mr. Goldstrike', 'Gold Dust'

Evergreen shrub with showy foliage. Requires some shade.

Japanese Aucuba

3 gal	\$25.00
5 gal	\$45.00
7 gal	\$65.00

■ AZALEA Assorted varieties – Evergreen

- 'Blaauw's Pink'—dense rounded, double salmon-pink flowers. 3' high x 3' wide.
- 'Delaware Valley White', 'Pleasant White'—mounded, large white flowers, mid season.
- 'Gumpo Pink' / White—dwarf, long flowering time, Torrey's favorite.
- 'Hino Crimson'—early red flowers.
- 'Nancy of Robin Hill'—large pink double flowers late in season. 24" high.
- 'Poukhanense Compacta'—dark lavender flowers early in season.
- 'Silver Sword'—variegated evergreen, brilliant crimson red 1¼" flowers.
- 'Stewartstonian'—deep red flowers, good fall color.
- 'Tradition'—pink double flowers, compact habit.

2 gal	\$18.50
3 gal	\$22.00
5 gal	\$35.00

- 'Encore™ Bloom-A-Thon'—3 seasons of bloom! For sun or part shade.

3gal	\$30.00
------	---------

■ AZALEA Assorted varieties – Deciduous

Deciduous upright flowering shrubs. Matures at 6–8' tall.

- 'Gibraltar'—flame orange flowers, heat tolerant.
- 'Golden Lights'—light orange to yellow flowers.
- 'Mount Saint Helens'—yellow to pink flowers.

3 gal	\$30.00
5 gal	\$40.00

■ BAMBOO

Evergreen, zone 6 hardy—See staff, other varieties available

- Sunset Glow, Black Bamboo, Yellow Grove

5 gal	\$75.00
6–10'	\$125.00

■ BERBERIS

- **Berberis thunbergii atropurpurea 'Nana'**

A dense mounded deciduous shrub with red-purple foliage. 2' high x 3' wide.

- **Berberis thunbergii atropurpurea 'Rose Glow'**

New foliage is spotted rose-pink on upright arching branches. 4' high x 6' wide.

- **Berberis thunbergii atropurpurea 'Royal Burgundy'**

Deep burgundy red foliage. Excellent hedge. 3' high x 4' wide.

3 gal	\$22.00
5 gal	\$35.00

- **Berberis thunbergii 'Bonanza Gold'**

Compact bright yellow deciduous shrub. Dwarf shrub matures at 18" high x 36" wide.

- **Berberis thunbergii 'Concorde'**

Slow-growing dwarf. Intense fall color.

- **Berberis thunbergii 'Helmond Pillar'**

Upright purplish red column. 4' tall x 12—18" high.

- **Berberis thunbergii 'Orange Rocket'**

Coral-orange foliage. 4 - 5' tall.

3 gal	\$25.00
5 gal	\$35—\$40.00

■ BETULA

Betula 'Dura Heat', 'Heritage', (GOLD MEDAL WINNER)

Vigorous growing, pyramidal-shaped, deciduous tree. Holds its leaves through hot summers. Exfoliating bark. 35 - 40' tall x 30' wide.

	6—8' / 15 gal	\$145.00
Clump &	8—10'	\$195.00
Single Stem	10—12'	\$215.00
	12'+	\$275.00

■ BUDDLEIA

A fast growing shrub with range of flower colors. Mass clusters of small fragrant flowers in July through fall. Attracts butterflies. Borders, masses, and for cut flowers.

- **'Black Knight'**—dark purple flowers, 5—8' high.
- **'Nanho Blue' & 'Purple'**—bluish flower, 4 x 4'—smaller more compact.
- **'Royal Red'**—lavender-red flowers in summer, 5—8' high.
- **'White Profusion'**—white flowers, 5—8' high.

3 gal	\$22.00
5 gal	\$35—40.00

Nice. Good inventory!

Lo & Behold® from Proven Winners & Pugster Series

- **'Blue Chip'**—dwarf, continuous flowers in blue, 2—3' high.
- **'Purple Haze'**—dwarf, continuous flowers in purple-blue, 2—3' high.
- **'Miss Molly'**—continuous flowers in purple-blue, 4—5' high.

3 gal	\$28.00
-------	---------

■ BUXUS**Boxwood****Buxus microphylla / koreana****Boxwood hybrids**

Great evergreen shrubs for small to medium hedges. Sun to part shade.

- 'True Spreader'—medium to fast growing, 3 x 4'.
- 'Winter Gem'—grows 4—6' high x wide, densely branched and hardy.
- x 'Green Gem'—slow growing, dense globe, 2 x 2'.
- x 'Green Mountain'—matures at 5', cone shaped with light green foliage.
- x 'Green Velvet' (**GOLD MEDAL WINNER**)- grows 3—4' high and wide. *Home Grown.*

3 gal, 15—18" \$25—\$28.00

5 gal & 18" B&B \$40—\$45.00 *Weekly Specials Available

7 gal 18—24" B&B \$45.00—\$65.00

7 gal 24—30" B&B \$65.00—\$95.00

30—36" B&B \$125.00—\$145.00

Good Selection—Spirals & Pom Poms Available!

Buxus sempervirens**American or Common Boxwood**

A dark green, broadleaf, evergreen shrub. Matures over long time at 10' high x 10' wide.

Leaves are dark green on top with a yellowish green underside.

Globe or Pyramidal 7 gal \$65.00

24—30" B&B \$65 / 85.00

Dee Runk (Uprights) 30—36" B&B \$85.00

Rotundifolia 3—4' B&B \$135.00

(Highlander & Skywalker)

Buxus sempervirens 'Variegata'**Variegated Boxwood**

A dark green broadleaf evergreen shrub. Creamy white-edged leaf.

Globe or Pyramidal 3 gal \$30.00 *Home Grown*

" 5 gal \$50.00 *Home Grown*

" 24—30" \$75—\$85.00 *Home Grown*

We also grow & sell
◆ 'Franklin's Gem', ◆
'Wee Willie' Pom Poms, Rotundifolia
'Justin Brouwers' Topiary, & Spirals.
'Highlander' & 'Skywalker'

Call for pricing and availability.

■ CALYCANTHUS

Sweetshrub/Carolina Spicebush

Calycanthus floridus

Fragrant, flowering shrub, sun or shade. 6—9' high.

3 gal	\$28.00
5 gal	\$45.00

■ CALLICARPA

Beautyberry

Callicarpa dichotoma 'Issai'*Purple Beautyberry*

Deciduous shrub with pinkish flowers, small, metallic-purple berries. 4' high.

3 gal	\$23.00
-------	---------

■ CAMELLIA

Camellia

Hardy evergreen series. Blooms October/November/December.

- Winter Star
- Winter Rose
- Pink Icicle
- Winter Snowman

5 gal	\$75.00	
3' B&B	\$135.00	<i>Limited</i>

■ CARPINUS

Hornbeam

Carpinus betulus 'Fastigiata', 'Frans Fontaine'*Upright European Hornbeam*

Dense upright tree. Heat and drought resistant. Effective as a screen. Matures at 40'.

15 gal	\$165.00
1½ —2"	\$205.00
2—2½"	\$245.00
2½—3"	\$305.00

■ CARYOPTERIS

Bluebeard

Caryopteris x clandonensis 'Blue Mist', 'Dark Knight', 'Longwood Blue'

A dense, low growing shrub with silvery gray leaves. Dark blue flowers in late summer.

3 gal	\$23.00
5 gal	\$35.00

■ CEDRUS

Cedar

Cedrus atlantica 'Glauca'*Blue Atlas Cedar*

A quick growing evergreen that loves full sun. Deep blue needles on upright branches.

A formal, yet striking tree that matures at 60 tall x 30—40' wide.

7—8', 15 gal	\$185.00
8—10' B&B	\$275.00
10—12' B&B	\$365.00

■ CEDRUS

Cedrus atlantica 'Glauca Pendula', 'Blue Cascade'

Weeping Blue Atlas Cedar

A weeping form of the Blue Atlas Cedar that has cascading branches.

An easily trained weeping evergreen.

10 gal, 4—5'	\$175.00	
6—7' B&B	\$265.00	<i>Hand picked Specimen</i>
<i>Larger Specimens Available</i>		

Graceful evergreen tree. Variety specific.

- *C. deodara* *Albospica* • *C. deodara* *Aurea* • *C. deodara* *Kashmir* • *C. libani*

7—8'	\$235.00
8—10'	\$325.00

■ CEPHALOTAXUS

Japanese Plum Yew

- 'Dukes Garden' (GOLD MEDAL WINNER)
- 'Fastigiata' & Prostrata

Slow-growing, evergreen shrub with spiral needles. Deer resistant

3 gal	\$35.00	<i>Limited</i>
5 gal	\$55.00	
7 gal	\$85.00	

■ CERCIDIPHYLLUM

Katsura Tree

Cercidiphyllum japonicum

Large deciduous tree with pyramidal shape. Bluish-green foliage turns apricot in fall.

Matures to 40' x 20'.

2—2½"	\$285.00	<i>Limited</i>
2½—3"	\$345.00	

■ CERCIS - Good Selection

Redbud

- *Cercis canadensis* 'Appalachian Red'

Appalachian Red Redbud

A small native deciduous tree with pink & red spring flowers and green foliage. Matures at 15—25' tall x 15—25' wide. Full sun, partial shade. Attracts butterflies.

- *Cercis canadensis* 'Rising Sun'

Eastern Redbud

A small deciduous tree with pinkish-purple spring flowers. Good border specimen.

Matures at 20—30' tall x 25' wide. Single and Clumps.

- *Cercis canadensis* 'Forest Pansy' 'Merlot'

Forest Pansy Eastern Redbud

Heart-shaped leaves open an intense red-purple, fading to dark green by midsummer.

Rose-purple flowers in spring on bare branches.

15 gal	\$145.00
1½—2" or 6—8' multi	\$185.00
2—2½" or 8—10' multi	\$230.00
2½—3"	\$285.00
3—3½"	\$325.00

- **Cercis canadensis 'Covey'** *Lavender Twist Weeping Redbud*
Weeping, deciduous small tree that has spectacular purple flowers and green leaves.
 - **Cercis canadensis 'Heartbreaker'** *Heartbreaker Weeping Redbud*
Weeping. Foliage emerges red, matures to deep green. Matures at 12' tall x 10' wide.
 - **Cercis canadensis 'Ruby Falls'** *Ruby Falls Weeping Redbud*
Weeping specimen with deep lavender flowers followed by glossy maroon leaves. 6' tall x 10' wide.
 - **Cercis canadensis 'Vanilla Twist'** *Vanilla Twist Weeping Redbud*
Weeping specimen with stunning white blooms. Heart-shaped leaves fill the tree as blooms fade and remain light green throughout the season.
- | | |
|--------|----------|
| 15 gal | \$165.00 |
| 1½—2" | \$210.00 |
| 2½"—3" | \$240.00 |

■ CHAMAECYPARIS

Cypress

Chamaecyparis nootkatensis 'Pendula' (GOLD MEDAL WINNER) *Weeping Alaskan Cedar*

Tall weeping evergreen tree. Brown-gray bark. Requires moist soil. Matures at 40'.

6—7'	\$185.00
7—8'	\$250.00
8—10' B&B	\$335.00

Chamaecyparis obtusa 'Gracilis', 'Compacta', 'Aurea', 'Crippsii' *Hinoki Cypress*

A spreading pyramidal plant with unique foliage. Matures at 8—12'.

5 gal	\$45.00
7 gal	\$95.00
3—4'	\$130.00
4—5'	\$150.00
5—6'	\$205.00

Chamaecyparis pisifera 'Filifera Aurea', 'King Gold', 'Gold Mop' *Goldthread Cypress*

Dense mound of drooping branches with yellow foliage. Useful in rock gardens.

3 gal	\$23.00
5 gal	\$40.00
7 gal, 30—36"	\$65.00

■ CLETHRA

Summersweet

Clethra alnifolia 'Hummingbird'

Hummingbird Summersweet

(GOLD MEDAL WINNER) An improved selection with a smaller, neater habit. Dwarf. Large spikes of white flowers July to September.

Clethra alnifolia 'Ruby Spice'

Ruby Spice Summersweet

(GOLD MEDAL WINNER) Large spikes of pink flowers July to September. Dark blue-green foliage. Can grow to 4—5' high.

3 gal	\$23.00
5 gal, 24—30"	\$35.00

■ CORNUS

Cornus alba 'Elegantissima', 'Ivory Halo'

• *C. stolonifera* 'Arctic Fire', Buds Yellow

Deciduous shrub with white flowers in late spring. Fast growing red twigs provide winter interest. Matures at 8—10' tall and wide.

3 gal	\$23.00
5 gal, 24—30"	\$35.00
7 gal, 30—36"	\$40.00

- *C. florida* 'Cherokee Brave'. Red bracts (flowers).
- *C. florida* 'Cherokee Princess'. Large white bracts.

• *C. florida* 'Rubra'. Pink petal-like bracts.

Small tree with showy 'flowers' in spring. Small red fruits and deep red foliage in fall.

Matures at 20' tall. Variety specific.

10 gal or 6—7'	\$145.00
7—8', 1½—2"	\$175.00
2—2½"	\$225.00



Cornus - Rutgers Hybrids

• *C. x 'Aurora'* (GOLD MEDAL WINNER) • *C. x 'Celestial'* • *C. x 'Constellation'*

• *C. x 'Stellar Pink'*

Small, disease resistant tree with large flowers, red-purple fall color. Hardy. Variety specific.

15 gal or 6—7'	\$145.00
7—8', 1½—2"	\$175.00
8—10' or 2—2½"	\$225.00
2½—3"	\$275.00

Flowering Dogwood

Cornus kousa

Small tree with white flowers and reddish fruit. Exfoliating bark. Matures to 20—25' tall x 15' wide.

15 gal, 6—7'	\$155.00
7—8'	\$185.00
Multi & single stem avail. 2—2½", 8—10'	\$235.00
2½—3", 10—12'	\$295.00

• *Cornus kousa* 'Stellar Pink'

A hybrid dogwood noted for its vigorous habit and large-bracted flowers. A small deciduous tree with a dense upright habit. Matures at 15—20' feet tall & wide.

7—8'	\$205.00
------	----------

Kousa Dogwood

■ CORYLUS

Corylus avellana 'Contorta', 'Red Dragon'

Selection of European Filbert. Twisting and curling branches. Matures at 6—8'.

7 gal	\$85.00
3—4' B&B	\$165.00

European Filbert

Harry Lauder's Walking Stick

■ COTINUS

Cotinus coggygria 'Royal Purple'

Smoke Tree

Royal Purple Smoke Tree

Deciduous bushy tree or shrub with dark red-purple foliage that turns scarlet in fall.

Pink, hairy, plume-like panicles grow to be 6" long that become grey as they mature, creating a smoke-like effect. This plant matures at 15' tall x 15' wide.

3 gal	\$28.00
5 gal	\$45.00
10 gal	\$75.00
Heavy 5—6'	\$165.00

Sal repens
Coral beauty
Christmas Carpet

■ COTONEASTER

Cotoneaster dammeri 'Coral Beauty' (GOLD MEDAL WINNER) *Coral Beauty Cotoneaster*

Low, creeping evergreen. Abundant coral-red fall fruit. *Tom Thumb, Christmas Carpet*

3 gal	\$23.00
-------	---------

■ CRATAEGUS

Crataegus viridis 'Winter King' (GOLD MEDAL WINNER)

Hawthorn

Winter King Hawthorn

Small tree with a rounded, vase-shaped form. White flower clusters in spring. Bright orange-red fruit persists through winter. Matures at 20—30'.

1½—2"	\$195.00
2—2½"	\$235.00 *Limited*

■ CRYPTOMERIA

Cryptomeria japonica 'Globosa Nana' (GOLD MEDAL WINNER)

Japanese Cedar

Dwarf Japanese Cedar

Dense, dome-shaped evergreen shrub. Sun to light shade. Grows 2—3'.

3 gal	\$25.00
-------	---------

Cryptomeria japonica 'Radicans', 'Sekkan Sugi', 'Yoshino' (GOLD MEDAL WINNER), 'Black Dragon'

Japanese Cedar

Upright growing pyramidal evergreen tree. Likes sun / light shade. Matures at 20—40'.

Yoshino & Radicans	7 gal	\$60.00
<i>call for pricing on others</i>	15 gal	\$150.00
215.283.3228	6—7', B&B	\$175.00
	7—8'	\$250.00
	8—9'	\$300.00
	10—12'	Call for pricing

■ CUPRESSOCYPARIS

x Cupressocyparis leylandii (sp.), 'Emerald Isle'

Leyland Cypress

Narrow, fast-growing evergreen tree. Excellent screening plant, very adaptable. Requires trimming. Fall hazard. Matures at 60' tall.

7 gal, 3—4'	\$45.00
7 gal, 4—5'	\$85.00
15 gal	\$105—145.00
30 gal, 7—8'	Call for pricing

■ CYTISUS

Scotch Broom

Dense clumps of slender bright green stems covered with inconspicuous bright green leaves. Abundant sprays of fragrant pea-like blooms in early spring.

- 'Burkwoodii'—garnet-red.
- 'Lena'—semi-dwarf, 3 x 3', orange-red bicolor.
- 'Moonlight'—pale cream-yellow.

3 gal \$23.00

■ DEUTZIA

Deutzia gracilis 'Nikko' (GOLD MEDAL WINNER),
D. x 'Magician' (GOLD MEDAL WINNER)

Deutzia

A good hedge, mass, or border with white cherry blossom flowers, plant in full sun.

3 gal \$23.00

■ ENKIANTHUS

Enkianthus campanulatus

Redvein Enkianthus

Medium upright deciduous shrub. Great fall color. Creamy yellow with red veined flower. Likes sun / part shade. Up to 6—8' high x 4' wide.

3 gal \$35.00

7 gal \$65.00

■ ERICA

Spring Heath

Low mounding evergreen shrub. Pink or white flowers in February / March. 2' high x 3' wide.

3 gal \$20.00

■ EUONYMUS

Euonymus alatus 'Compactus'

Dwarf Burning Bush

Dense, deciduous hedge or screen with 3" dark green leaves. Fiery red fall leaf color. Matures at 10'. Can be maintained at 5'.

3 gal, 18—24" \$25.00

5 gal \$35.00

7 gal, 24—30" B&B \$40.00

30—36" B&B \$55.00

3-4' \$75.00

Larger sizes available

Euonymus fortunei 'Emerald Gaiety', 'Emerald 'n Gold'
'Moonshadow', 'Silver King'

Euonymus

Evergreen shrub, sun to part shade.

3 gal \$25.00

5 gal \$35.00

Euonymus kiautschovicus 'Manhattan'

Manhattan Euonymus

Medium growing upright evergreen shrub with glossy, dark green leaves. Matures at 4—6'.

3 gal \$25.00

5 gal \$40.00

Espalier 5 gal \$125.00

■ FAGUS – Best Tree In The Forest

Fagus 'Grandifolia'

2–2½"

\$275.00

European Beech

American Beech

Fagus sylvatica 'Riversii', 'Rohanii'

Purple Beech

Medium growing pyramidal deciduous broadleaf tree. Silver bark. Deep purple leaves

2½–3½"

\$350.00

2½–3"

Call for pricing

3–3½"

Call for pricing

Fagus sylvatica 'Tricolor'

Tricolor Beech

Medium growing, pyramidal deciduous tree. Purple leaf form with pink & white leaf margins. 25' tall x 15-20' wide.

7–8', 1½–2"

\$235.00

Limited

2–2½"

\$295.00

Limited

Fagus sylvatica 'Purpurea Pendula'

Weeping Purple Beech

Purple-leaved from Netherlands. Branches sweep up and away from the center of the tree, forming a mound of foliage.

8–10'

\$285.00

10–12'

\$350.00

■ FORSYTHIA

Forsythia x intermedia 'Lynwood Gold'

Lynwood Gold Forsythia

Upright multi-stemmed shrub with brilliant yellow flowers in early spring. Matures 6–8' high x 6–8' wide.

5 gal

\$25.00

5–6' B&B

\$28.00

SPRING SPECIAL
5–6' \$19.50

■ FOTHERGILLA

• Fothergilla gardenii

Dwarf Fothergilla

A small shrub with dark green summer foliage, fall colors of yellow, orange, and red. Fragrant flowers in spring before the leaves.

• Fothergilla major 'Mount Airy'

Fothergilla

(GOLD MEDAL WINNER) A deciduous shrub with dark green foliage and profuse, fragrant spring flowers after the leaves emerge. Excellent fall color. 3–5' tall x 3–5' wide.

3 gal

\$25–30.00

5 gal

\$40.00

7 gal, 30–36"

\$60.00

■ GINKGO

Ginkgo biloba

Distinctive fan-shaped leaves. Bright yellow in the fall. Matures to 50'.

1½—2"

Call

2—2½"

Call—*Limited*

■ GLEDITSIA

Gleditsia triacanthos var. inermis 'Shademaster', 'Skyline'

Honeylocust

Honeylocust

Ascending branches with dark green leaves. Bright yellow fall color. Essentially podless.

Matures to 50'.

15 gal

\$135.00

2—2½"

\$215.00

2½—3"

\$295.00

Limited

■ GRASSES - see page 36 - Huge Selection

1 gal

\$9.00

2 gal

\$12.00

3 gal—Heavy

\$15.00

**DON'T CUT IT -
BURN IT!**

■ GROUND COVERS

50 to a flat / 2¼" Peat Pots

- Baltic and English Ivy (per flat) \$28.00
- Pachysandra (per flat) \$25.00
- Vinca Minor (per flat) \$40.00
- Ajuga—1 gal \$8.00

—(black scallop, bronze beauty, burgandy glow, catlin's giant, choc. chip)

See page 48 for a Groundcover Spacing Chart.

■ HAMAMELIS

Witchhazel

- Hamamelis x intermedia 'Arnold's Promise'

Arnold's Promise Witchhazel

Fragrant yellow flowers on bare branches in early to mid March. Rich yellow-orange fall color. Matures at 6—8' high and wide.

- Hamamelis x intermedia 'Diane' (GOLD MEDAL WINNER)

Diane Witchhazel

Bronze-red flowers on bare branches in early spring. Matures at 6—8' high and wide.

4 gal

\$35.00

7 gal

\$75.00

5—6' B&B

\$150.00

■ HIBISCUS

Hibiscus syriacus

Upright, multi-stemmed small tree. Summer flowers. Sun or part shade. Matures 8—12'.

- 'Ardens'—large double rose-purple flowers.
- 'Blue Bird'—sky-blue with small red center.
- 'Blushing Bride'—double rich pink flowers.
- 'Diana'—(**GOLD MEDAL WINNER**) large pure white, crinkled petals.

3 gal	\$25.00
5 gal	\$35.00
15 gal	\$105
6—7' B&B	\$165.00



Tree Form

■ HYDRANGEA * HUGE SELECTION *

- *H. anomala petiolaris*

Climbing Hydrangea

A woody, deciduous climber, clinging by aerial roots. Dark green leaves with fragrant white flowers. Sun or shade.



3 gal	\$28.00
5 gal	\$38.00
7 & 10 gal	\$85.00

staked or espalier

- *H. arborescens*, 'Annabelle' (**GOLD MEDAL WINNER**),

Smooth Hydrangea

'Bella Anna', 'Incrediball' Dark green leaves, large snowball flowers. Sun or shade.

- *H. macrophylla* 'Endless Summer', 'Blushing Bride',

Endless Summer Collection

'Twist and Shout', 'Bloom Struck' from Proven Winners

Repeat bloomer with flowers June—September. Fast growing. Part shade.

- *H. macrophylla* 'Nikko Blue', 'Nantucket Blue

Bigleaf Hydrangea

large dark green leaves. Numerous flowers in mid to late summer. Matures at 4—6.

- *H. macrophylla* 'Variegata'

Variegated Hydrangea

Mounding, broad, dark green leaves edged in creamy white. Mid to late summer lace-cap flowers. Matures at 3—4' high x 3—4' wide. Part shade.

- *H. paniculata* BoBo™ from Proven Winners

Bobo Hydrangea

Dwarf compact shrub with upright flowers that may turn pink in fall. Part sun 3—4' high.

- *H. paniculata* 'Little Lime' from Proven Winners

Little Lime Hydrangea

Dwarf form of 'Lime Light', with all the great attributes. 3—5' high.

- *H. paniculata* 'Limelight' from Proven Winners

Limelight Hydrangea

(**GOLD MEDAL WINNER**). Dark green leaves, bright green blooms in mid to late summer, turning pink in fall. Matures at 6—8'. Sun to part shade.

- *H. paniculata* 'Pinky Winky' from Proven Winners

Pinky Winky Hydrangea

Large summer flowers open white, turn pink. 6—8' high and wide. Sun to part shade.

- *H. paniculata* Quick Fire™ from Proven Winners

Quick Fire Hydrangea

Early blooming. Flowers open white then turn pink. Part sun 8' high.

- *H. paniculata* Vanilla Strawberry™

Vanilla Strawberry Hydrangea

Large flowers start out white, turn pink, then strawberry red. Full sun. 6—7' high.

3 gal / 18—24"	\$28.00	
5 gal	\$35—45.00	Proven Winners
7 gal	\$45—55.00	
7 gal Tree	\$65.00	
10 gal Tree	\$105.00	
5—6' B&B Tree	\$150.00	<i>Fat Boys</i>

■ HYDRANGEA

Hydrangea quercifolia, 'Alice', 'Pee Wee',
'Snow Queen' (GOLD MEDAL WINNER)

Oakleaf Hydrangea

Deciduous, mound forming shrub. White flowers turn pink with age. Flowers from midsummer to early fall. Deep red fall color. Part shade to shade.

3 gal	\$30.00
5 gal	\$40.00
7 gal, 30"+	\$60.00

Home Grown Special!

■ HYPERICUM

Hypericum 'Hidcote', 'Sunburst', 'Albany Purple'

St. Johnswort

A small deciduous shrub with large yellow flowers in June to July. Grows to 2' high. Sun.

3 gal	\$23.00
-------	---------

■ ILEX - *Giant Selection*

Holly

Ilex crenata

Japanese Holly

Evergreen shrub. Small leaves, insignificant berries. Border plantings. Many varieties.

- 'Compacta'—rounded globose spreader, tight habit, 3' x 3'.
- 'Green Lustre'—dark green leaves, flat-topped spreading habit, 3' x 6'.
- 'Helleri'—low-growing dwarf spreader, 3' x 5'.
- 'Hoogendorn'—low-growing, compact shrub, 2' x 3'.
- 'Soft Touch'—dense rounded shrub, soft texture, 2' x 3'.

3 gal	\$23.00
5 gal	\$35—40.00
7 gal	\$55—65.00 Call

■ ILEX

Ilex crenata—Upright and fastigate forms

Japanese Holly

Evergreen shrub. Small green leaves, insignificant berries. Sun or shade.

- 'Chesapeake'—pyramidal, shape, 6—8' tall x 4—5' wide.
- 'Nigra'—Dark glossy green foliage, 6—10' tall.
- 'Sky Pencil'—Dark glossy green foliage, slender columnar form, 6—8' tall.
- 'Steeds'—Dark glossy green foliage, 5-8' tall.

3 gal, 24—30"	\$25.00
5 gal, 30—36"	\$35.00
7 gal, 36—42"	\$55—65.00
Call for larger sizes	

Ilex glabra 'Compacta', 'Shamrock'

Compact Inkberry

Rounded evergreen with dark green leaves. Good for hedges. Matures at 4—6' high and wide.

3 gal	\$20-economy
3 gal	\$24.00
5 gal	\$35.00
7 gal	\$45-55.00

Of all the trees in the forest, it is the Holly that bears the crown.

Ilex opaca—'Old Heavy Berry', 'Miss Helam', 'Jersey Princess' **American Holly**
GOLD MEDAL WINNER. A slow-growing native pyramidal holly good for specimen use.
 Dark green evergreen foliage, bright red berries. Females require male for fruit set. Ma-
 tures at 20—30' tall x 20' wide.

5—6'	\$225.00	Torrey's Favorite
6—7'	\$275.00	
7—8'	\$365.00	Limited
8—10'	\$465.00	Limited

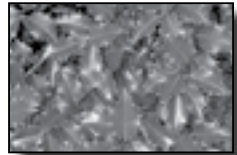
Ilex verticillata 'Winter Red' (**GOLD MEDAL WINNER**), **Winterberry**
 x 'Sparkleberry' (**GOLD MEDAL WINNER**), 'Wild Fire', 'Red Sprite' (**GOLD MEDAL WINNER**),
 'Southern Gentleman', 'Jim Dandie' (male pollinator)
 Deciduous shrubs with profuse bright red fruit lasting through winter.
 Excellent for masses and borders. Females require male for fruit set.

3 gal	\$23.00	Special—Home Grown
5 gal	\$30.00	
7 gal	\$35.00	
3—4' B&B	\$75.00	
4—5' B&B	\$95.00	

Ilex x meserveae **Meserve Hybrid Holly**
 A group of very hardy evergreen hollies, with dense dark green to blue-green foliage.
 Takes well to trimming. Sun to Shade.

- 'Berri-Magic® Kids'—Glossy blue-green foliage, bright berries, self-pollinator.
- 'Blue Boy/Girl'—Dark blue-green foliage, a dense and vigorous grower. 10 x 10'.
- 'Blue Prince/Princess'—A dense erect to spreading shrub, flowers late spring. 10 x 10'.
- 'China Girl/Boy'—Lustrous bright green leaves, very hardy. Compact, rounded shrub. 10 x 10'.

3 gal, 15—18"	\$23.00
3 gal, 18—24"	\$25.00
5 gal, 24—30"	\$40.00
7 gal	\$55.00



x meserveae 'Dragon Lady', 'Centennial Girl'
 Pyramidal, lustrous green leaves & large red fruit. Matures to 10—15'.

x 'Nellie R. Stevens' & 'Kassab' **Nellie Stevens Holly**
 Popular selection, large evergreen female tree with spiny, glossy, dark green leaves.
 Produces abundant shiny scarlet red berries. Matures at 15—25' tall x 12' wide.

5—6'	\$185.00
6—7'	\$275.00
7—8'	\$355.00
8—10'	Call for pricing

LIMITED

■ ITEA

Itea virginica

Sweetspire

Henry's Garnet Virginia Sweetspire

'Henry's Garnet' (GOLD MEDAL WINNER), 'Little Henry' (PROVEN WINNER)

Deciduous, multi-stemmed. White fragrant flowers attracting butterflies. Fall color bright red-purple. Tolerates wet soils. Sun or shade.

3 gal	\$23.00
5 gal	\$35.00

■ JUNIPERUS

Juniper

EXCELLENT SELECTION — VERY HARDY!

Assorted Varieties — Spreading & Ground-cover

- *chinensis* 'Old Gold'—Wide spreading, bronze-gold foliage, fragrant. 3' x 4'.
- *chinensis* 'Sea Green'—Compact and vase-shaped, dark green. 5' x 6'.
- *conferta* 'Blue Pacific'—Ground cover, blue and green foliage, 6" x 6'.
- *horizontalis* 'Wiltoni'—Ground cover, blue green foliage. 12" x 8'.
- *procumbens* 'Nana'—Low, spreading, dwarf shrub. Medium green. 12" x 6'.
- *squamata* 'Blue Star'—Silvery blue leaves. Round and compact. 16" x 36".

2 gal	\$13.00
3 gal	\$22.00

■ JUNIPERUS Assorted *chinensis* Junipers - Upright forms

Blue Point, Ames, Fairview, Hooks, Robusta, Torulosa, Iowa

Upright, evergreen tree, semi fragrant.

5—6' B&B	\$140.00
6—7' B&B	\$160.00
7—8' B&B	\$185.00

Juniperus scopulorum 'Moonglow'

Moonglow Juniper

Dense pyramidal evergreen that offers intense silver-blue foliage. Matures at 20' tall.

Topiary Junipers—Hetzi, Mint Julep, San Jose, Wichita Blue

5 gal	\$95.00
7 gal	\$135.00
10 gal	\$175.00

Spiral Junipers—Spartan, Hetzi, Robusta, Moonglow, Gold Cone, Wichita Blue

7 gal	\$85—125.00
10 & 15 gal	\$195.00

Juniperus virginiana

Eastern Red Cedar

Native pyramidal evergreen for screening and sound breaks.

4—5'	\$95.00
5—6'	\$145.00
6—7' B&B & 20gal	\$185.00

■ **KALMIA** – *Great Selection*

Mountain Laurel

- *latifolia* ‘Bullseye’—showy plant, cinammon buds, white flowers, 6’ high x 6’ wide.
- *latifolia* ‘Carol’—red buds open to white flowers, wavy, twisted foliage, 6—8’.
- *latifolia* ‘Minuet’—dwarf habit, 3’ high / wide. White flowers / maroon band.
- *latifolia* ‘Olympic Fire’—upright, Red buds / pink flowers, 6—8’ high.
- *latifolia* ‘Sarah’—showy plant, deep red buds, deep pink flowers, 5—6’.

3 gal	\$35.00
5 gal	\$45—55.00
3—4’ B&B	Call for pricing

■ **LAGERSTROEMIA** – *Great Selection*

Crape Myrtle

Large shrubs / trees with massive amounts of late summer flowers. Glossy green foliage turns shades of red and orange in fall. Gray-brown bark adds winter interest.

- ‘Dynamite’—cherry red, red leaves fade to green. 20 x 15’.
- ‘Muskogee’—light lavender-pink flowers. 20 x 15’.
- ‘Natchez’ (**GOLD MEDAL WINNER**)—white flowers. 20 x 20’.
- ‘Pink Velour’—pink flowers. 8—10’.
- ‘Red Rocket’—ruby red flowers. 15’.
- ‘Siren Red’—dark red flowers. 10—12’.
- ‘Tuscarora’—deep coral-pink flowers. 20’.
- ‘Tonto’—fuschia-red flowers. 10—12’.

HEAVY B&B PLANTS

7 gal	\$55.00
10 & 15 gal, 4’	\$95.00
15 gal, 6—7’ B&B	\$175.00
15 gal, 7—8’ B&B	\$195.00
30 gal, 8—10’	\$245.00
8—10’ B&B	\$265.00
10—12+’	Call—Yes we have big ones!

Dwarf Varieties:

- ‘Petite Embers’—red flowers. 5’.
- ‘Petite Pinkie’—pink flowers. 5’.
- ‘Cherry Dazzle’

3 gal	\$25.00
5 gal	\$40.00



**You want nice
Crape Myrtles?**

CALL US: 215.283.3228

**Plenty to choose from
ALWAYS!**

■ LEUCOTHOE

- *Leucothoe axillaris*

Coast Leucothoe

Low spreading evergreen shrub with dark green, glossy leaves. Shade tolerant. White flowers in April and May. Purple winter color. Grows to 4 x 6'.

- *Leucothoe fontanesiana* 'Girard's Rainbow'

Rainbow Drooping Leucothoe

Low spreading evergreen shrub with dark green, glossy leaves. Emerging shoots are bronze-red. Shade tolerant. White flowers in May. Purple winter color. 4 x 6'.

3 gal	\$28.00
5 gal, 24—30"	\$50.00

■ LIGUSTRUM

Ligustrum vulgare

Privet

Common Privet

Rapid growing upright deciduous broadleaf shrub. Likes sun / part shade. Most often used as hedge. Grows 10—15'. Shear to any height.

3 gal	\$20.00
5 gal	\$40.00

- *Ligustrum Koreanum* 'Semi Evergreen'

Korean Privet

5 gal	\$45.00
-------	---------

■ LINDERA

Northern Spicebush

Lindera benzoin

Upright deciduous shrub. Fragrant flowers in spring. Good for moist locations. Native plant with nice red fruit. Grows 6—12'.

3 gal	\$25.00
5 gal	\$40.00

■ LIQUIDAMBAR

Sweet Gum

Liquidambar styraciflua

Trouble-free deciduous tree, maturing at 50—60'. Interesting fruit.

'Happidaze'

'Slender Silhouette'

Fast-growing fastigiate tree maturing at 35—40' and only 4' wide. Smaller fruits than the typical sweet gum.

2—2½"	\$250.00
2½—3"	\$295.00

■ LIRIODENDRON

Liriodendron Tulipifera

Tulip Poplar

2—2½"	Call for pricing
2½—3"	Call for pricing

■ LIRIOPE

Liriope / Lilyturf

Liriope (Lilyturf)—likes sun or shade. Premium Grade.

- **Big Blue**—purple flowers in late summer / spicata—creepy
- **Variegated**—variegated foliage with purple flowers

3.5"	\$2.95	
1 gal	\$5.50	<i>Fat & Full</i>

■ MAGNOLIA

Magnolia grandiflora 'Edith Bogue' (GOLD MEDAL WINNER), *Southern Magnolia*
 'Bracken's Brown Beauty' (GOLD MEDAL WINNER), 'Little Gem', 'Kay Parris',
 'Claudia Wannamaker', 'DD Blanchard', 'Teddy Bear' *NEW*
 Evergreen, white flowering trees. Variety specific.

7 gal	\$110.00	
15 gal	\$225.00	
30 gal and B&B	\$375.00	Call for larger specimen B&B

Magnolia stellata 'Royal Star'

Royal Star Magnolia

Dense shrub or small tree with sweetly fragrant white double flowers. The earliest-blooming Magnolia. Matures to 15'.

10 & 15 gal, 3—4'	\$65.00	
4—5'	\$140.00	

Magnolia x soulangiana

Saucer Magnolia

Medium-sized low-branching tree. Early spring flowers. Matures to 30—35'.

6—7'	\$165.00	
7—8'	\$175.00	
8—10'	\$250.00	

Magnolia virginiana

Sweetbay Magnolia

Upright, multi-stemmed shrub with blue-green leaves. Late spring creamy white, fragrant flowers. Reddish-orange fruit. Matures to 20'.

Magnolia virginiana 'Moonglow'

Moonglow Magnolia

New Variety! Compact and more dense. Semi-evergreen.

6—7'	\$165.00	
7—8'	\$175.00	
8—10'	\$250.00	<i>Limited</i>
10—12'	Call for pricing	

■ MAHONIA

Mahonia aquifolium

Leatherleaf Mahonia

5 gal	\$45.00	<i>Garden center quality</i>
-------	---------	------------------------------

■ MALUS Danielle's Special Tree

Crabapple

Small trees valued for profuse spring flowers and attractive autumn fruit.

- x 'Donald Wyman' (GOLD MEDAL WINNER)—red buds open to white flowers, 20' tall and wide, disease resistant.
- x 'Snowdrift'—white flowers, 20' tall and wide, resistant to scab, poor for fireblight.
- x 'Louisa'—weeping Crabapple. Red buds, pink flowers, 10—15' high and wide.
- x 'Prairifire'—red flowers, persistent fruit, 20' x20'.

1½—2"

\$185.00

Limited

2—2½"

\$205.00

■ METASEQUOIA

Dawn Redwood

Metasequoia glyptostroboides & Gold Rush

Dawn Redwood

GOLD MEDAL WINNER. Rapid growing pyramidal, deciduous conifer. Likes Sun. Good fall color. Handsome tree.

15 gal

\$165.00

8—10'

\$235.00

10—12'

\$295.00

Call for larger sizes

■ MICROBIOTA

Russian Cedar

Microbiota decussata

Low-growing evergreen, ground cover shrub. Part sun. 12" x 8'.

3 gal

\$23.00

■ MYRICA

Northern Bayberry

Myrica pensylvanica

Deciduous shrub with small, bluish black berries.

3 gal

\$25.00

5 gal

\$35.00

■ NANDINA

Heavenly Bamboo

Nandina domestica 'Gulf Stream', 'Firepower', 'Sienna Sunrise'

Heavenly Bamboo

Evergreen shrub with upright shoots that likes full to partial sun. New growth is deep purple-red, foliage is green in summer and purple-red in winter. White flowers in late spring—summer followed by red berries. Matures at 4—5' tall x 3' wide. (Variety specific.)

3 gal

\$24.00

5 gal

\$35—45.00

7 gal heavy

\$75.00

■ NYSSA

Black Gum

Nyssa sylvatica 'Wild Fire' (GOLD MEDAL WINNER), 'Hayman's Red Rage'

Brightly colored foliage. 'Wild Fire' leaves emerge red, 'Red Rage' has bright red fall color.

2—2½"

\$215.00

2½—3"

\$265.00

■ OSMANTHUS

Osmanthus heterophyllus 'Goshiki' (GOLD MEDAL WINNER),
'Variegata' Variegated leaves tinged with pink, maturing to yellow over green leaves.
Sun to part shade. Compact grower 4—6'.

False-holly
Variegated False-holly

Osmanthus heterophyllus 'Gulf tide' (GOLD MEDAL WINNER)

Medium growing upright evergreen broadleaf shrub. Sun / shade. Fragrant white flowers. 8—15'.

Gulf tide False-holly

3 gal	\$30.00
5 gal	\$50.00
7 gal	\$75.00

■ OXYDENDRUM

Oxydendrum arboreum

Deciduous, early summer flowering tree. Tolerates part shade. Excellent fall color.
Matures at 20—25'.

Sourwood
Sourwood

10 gal	\$155.00
1½—2"	\$235.00

Limited

■ PERENNIALS *See page 37—Garden Center Quality*

Check out our new and improved Perennial Area.



50% expansion.

Send us your list!



1 gal \$8—10.00 | 2 / 3 gal \$12.00
1 gal economy perennials—\$6.00

■ PHOTINIA

Photinia x fraseri, 'Cracklin Red'

Rapid growing rounded evergreen broadleaf shrub. Likes sun. White flowers in spring.
Bright red new growth.

Redtip Photinia

3 gal	\$25.00
5 gal	\$35.00
7 gal	\$50.00

■ PHYSOCARPUS - *Great Plant!*

Physocarpus opulifolius 'Diablo' (GOLD MEDAL WINNER),
'Little Devil'

Intense red-purple foliage on arching branches. White flowers in summer. Native plant.

Ninebark
Purple-leafed Ninebark

Physocarpus 'Center Glow'

Yellowish-green and burgundy new foliage turns reddish purple in fall, 6'x6'.

Physocarpus 'Coppertina'

PROVEN WINNER. Shimmering, copper-colored foliage all season, turns red in fall, 7'x7'.

3 gal	\$24.00
5 gal	\$35.00
7 gal	\$50.00

24" Plus

Garden Ctr. Quality

■ PICEA

Picea abies

Medium to fast-growing evergreen tree. Great for windbreaks. Matures at 60' tall x 20' wide. An exceptional evergreen!

5—6'	\$105.00
6—7'	\$145.00
7—8'	\$175.00
8—9'	\$235.00
9—10'	\$295.00
10—12'	\$365.00
12—14'	\$595.00

*Call with
large orders*

Larger Spruce Available

Spruce
Norway Spruce

■ PICEA

Picea abies 'Pendula'

Grown naturally, evergreen tree grows over ground. Cascades over rocks or walls. Staked it becomes irregular with pendulous or weeping branches.

5—6' B&B	\$225.00
6—7'	\$265.00
7—8'	\$325.00

Spruce
Weeping Norway Spruce

Picea glauca 'Conica'

Conical-shaped evergreen tree. Very slow growing. Maximum height of 6—8'.

	3 gal, 18—24"	\$25.00
	5 gal	\$40—50.00
<i>Spiral</i>	7 gal, 42-48"	\$125.00
<i>Spiral</i>	7 & 10 gal	\$185—245.00

Dwarf Alberta Spruce

Picea omorika

Narrow evergreen tree with pendant branches. Matures at 50—60' tall x 15' wide.

6—7'	\$175.00
7—8'	\$195.00
8—10'	\$275.00

Limited

Serbian Spruce

Picea orientalis (GOLD MEDAL WINNER)

Broadly columnar, slow growing evergreen tree that matures at 40' tall x 15—20' wide.

5—6'	\$235.00
6—7'	\$295.00
8—10'	\$425.00

Limited

Oriental Spruce

Picea pungens

Natural form of Colorado Spruce, strong green-blue needles. Matures 30' tall x 15' wide.

5—6'	\$115.00
6—7'	\$165.00
7—8'	\$185.00
8—9'	\$250.00

Add \$20 for Shimmers

Limited

'Baby Blue Eyes' 'Fat Albert' & Fastigiata

Call

Colorado Spruce

Picea pungens 'Montgomery', Globosa**Montgomery Spruce**

Densely branched globe with bright silver-blue foliage. Matures to 4–6'.

5 gal STD	\$85.00
15–18", 6 gal	\$135.00
18–24"	\$185.00
24–30"	\$185.00
24–30" STD	\$155.00
30–36" STD	\$235

"HUGE!"

PIERIS - Good Selection!**Japanese Pieris****Pieris japonica**

- 'Cavatine'—Dwarf with dense foliage. White flowers spring. 4' high.
- 'Dorothy Wycoff'—Dark red buds, open to pink flowers. Mahogany winter foliage. White flowers in spring. 5' high.
- 'Mountain Fire'—dense evergreen shrub. Red foliage. White flowers spring. 8' high.
- 'Prelude'—compact, evergreen shrub. White flowers, 1–2' high.
- 'Red Mill'—slow growing, 6–8' high. New growth is reddish.
- 'Scarlet O'Hara'—tall, slender evergreen shrub. White fragrant flowers. 10' high.

3 gal, 18–24"	\$25–30.00
5 gal, 24–30"	\$45–50.00
7 gal, 30–36"	\$65–75.00
10 gal	\$75–85.00

Big Selection of Sizes!

PINUS**Pine****Pinus mugo pumilio****Dwarf Mugo Pine**

Slow growing evergreen shrub, 2' x 3'.

3 gal	\$30.00
5 gal	\$45.00

Pinus strobus—(Semi-Sheared—All Heavy)**Eastern White Pine**

Fast-growing pine with soft, blue-green needles. Great for large spaces. Matures 80'+.

5–6'	\$125.00
6–7'	\$140.00
7–8'	\$175.00

Limited

Pinus strobus 'Nana', P. densiflora 'Tanyosho' (standard)**Dwarf Pine**

Compact, dwarf evergreen shrub with a globe form. Matures to 6'.

30–36"	\$145.00
3–4'	\$185.00

Pinus strobus 'Pendula'**Weeping White Pine**

Weeping evergreen tree with twisted hanging branches and long green needles. Limbs will cascade to the ground. Matures to 20–40'.

20 gal, 6–7'	\$175.00
7–8'	\$250.00

Limited

■ PLATANUS

Planetree

Platanus x acerifolia 'Bloodgood', 'Exclamation'

London Plane Tree

Rapid growth, large specimen, exfoliating bark. Yellow fall color. Matures 80' tall & wide.

15 gal / 1½—2"	\$175.00
2—2½"	\$215.00
2½—3"	\$245.00
3—3½"	\$295.00

T. Rose
Special!

■ POTENTILLA

Potentilla fruticosa 'Abbottswood'

Abbottswood Potentilla

Compact deciduous shrub. Late spring to mid-autumn white flowers. Matures 30" tall x 4' wide. Easily grown and hardy.

Potentilla fruticosa 'Goldfinger'

Goldfinger Potentilla

Compact deciduous shrub with late spring to mid-autumn deep yellow flowers. Matures at 30" high x 4' wide. Easily grown and hardy.

3 gal	\$23.00
-------	---------

■ PRUNUS

Flowering Cherry

Prunus serrulata 'Kwanzan'

Kwanzan Cherry

Upright, deciduous tree. Deep pink flowers in late spring. Matures at 30'.

Prunus subhirtella 'Pendula'

Weeping Cherry

Gracefully weeping branches on medium size tree. Double pink flowers in spring. Green foliage in summer turns yellow to bronze in fall.

Prunus x 'Snow Fountain'

Snow Fountain Cherry

More compact cherry, with weeping branches and abundant white flowers in spring.

Prunus x 'Okame' (GOLD MEDAL WINNER)

Okame Cherry

Early Spring blooming. Dark pink flowers. Shiny bark.

Prunus x yedoensis

Yoshino Cherry

A spreading deciduous vase-shaped tree. Pink, spring flowers that turn white.

15 gal	\$145.00
2—2½"	\$205.00
2½—3"	\$225.00
3—3½"	\$295.00



**We have increased our growing capabilities every year.
We thrive on local business, so we buy and support
locally grown PA farms, as much as possible.**

■ PRUNUS

Plum

Prunus cerasifera 'Thundercloud'

Purpleleaf Flowering Plum

Upright deciduous tree. Purple foliage. Early spring pink flowers. Matures at 20–30'.

Prunus cerasifera 'Crimson Pointe'

Crimson Pointe Plum

Narrow, columnar (5–6') purple leafed tree grows 20–25' with pale pink flowers in spring.

15 gal	\$145.00
2–2½"	\$205.00
2½–3"	\$225.00
3–3½"	\$295.00

Prunus x cistena

Purpleleaf Sand Cherry

Hardy, multi-stemmed shrub. Pinkish flowers in mid-spring. Matures at 6–10' high.

4 & 5 gal, 24–30"	\$30.00
5 gal, 30–36"	\$35.00
7 gal, 3–4'	\$45.00

■ PRUNUS

Cherry Laurel

Prunus laurocerasus 'Otto Luyken'

Otto Luyken Cherry Laurel

Broad-leaved evergreen shrub. Dark rich green foliage. Fragrant cream-white flowers in spring. Matures at 3–4' high x 6' wide.

15–18" 3 gal	\$35.00
18–24" B&B	\$50.00
24–30" B&B	\$65.00
30–36" B&B	\$95.00
3–4' B&B	\$125.00

Best Selection Around!
Large Orders Welcome

Prunus laurocerasus 'Schipkaensis'

Skip Laurel

Broad-leaved evergreen. Dark green foliage. Fragrant cream-white flowers in spring. Matures at 8'.

30–36" B&B	\$45.00
3–4' B&B	\$85.00
4–5' B&B	\$95.00
5–6' B&B	\$135.00
6–7' B&B	\$165.00

*Excellent
Selection!*

**Call for larger orders
In stock all season!

■ PYRACANTHA

Firethorn

Pyracantha x 'Mohave'

Mohave Firethorn

Upright thorny deciduous shrub with prolific white flowers and red-orange fruits.

	3 gal	\$26.00
	5 gal	\$35.00
<i>Espalier</i>	5 gal.	\$125.00

■ PYRUS

Pear

Pyrus calleryana 'Aristocrat'

Aristocrat Flowering Pear

A conical deciduous tree resistant to storm damage. Early spring white flowers. Nice fall color. Matures at 30—35' tall x 15' wide.

Pyrus calleryana 'Capitol'

Capital Flowering Pear

Narrowly conical deciduous tree. Early spring white flowers. Nice fall color. Matures at 40' tall x 15' wide.

Pyrus calleryana 'Cleveland Select', 'Chanticleer'

Chanticleer Flowering Pear

An upright pyramidal tree. Flowers heavily in the spring with nice reddish-purple fall color. Matures at 30' tall x 15' wide.

15 gal	\$135.00
2—2½"	\$205.00
2½—3"	\$245.00
3—3½"	\$275.00

■ QUERCUS

Oak

Quercus—Pin Oak, Red Oak, White Oak (GOLD MEDAL WINNER), Willow Oak

Fast-growing native shade tree. Red fall color. Matures to 70' tall x 40' wide.

15 gal	\$135.00
2—2½"	\$225.00
2½—3"	\$245.00
3—3½"	\$335.00

■ RHODODENDRON

- 'Anna Kruschke'—Broadleaf evergreen with a purple-reddish flower. Part shade.
- 'Boursault'—Wide, upright, uniform branch growth. Rose-lilac flowers. Part shade.
- 'Capistrano' *—Dense, mound-forming. Large lemon yellow flowers. Shade.
- 'Chionoides' *—Compact, wider than tall; excellent even growth. Clear white flowers.
- 'Cunningham White' *—Low, compact habit, white flowers.
- 'Nova Zembla'—Showy red flowers in mid-season, vigorous with handsome foliage.
- 'PJM'—Bright lavender pink flowers mid April. Mahogany foliage in winter. Sun or shade.
- 'Roseum Elegans'—Large shrub with lavender-pink flowers. Cold and heat tolerant.
- 'Scintillation'—Dense, rounded shape. Large clear pink flowers. Part shade.
- 'Yaku Princess' *—Very slow-growing. 3' x 3'. Rose-pink buds to white flowers.

* Add \$5.00 per size

3 gal, 18—24"	\$25—30.00
5 gal, 24—30"	\$40—50.00
7 gal	\$65.00

- *Rhododendron maximum*

5 gal	\$40.00
3—4' B&B	\$95.00

*Rosebay Native Rhododendron**Limited*

■ RHUS

Rhus typhina 'Tiger Eyes'

Tiger Eyes Sumac

Lemon-lime foliage, fuzzy stems, dark red fruit in fall.

3 gal \$26.00

Rhus typhina 'Grow Low'

Aromatic leaves which turn a red-orange in the fall. Grows 2—3' tall with a 6—8' spread.

3 gal \$23.00

■ ROSA—Large selection in flower

Rose

A garden center selection of full bloom roses, most of the year!

Flower Carpet Roses & Drift Series

Fast-growing, low shrub roses with flowers throughout the season. Red, white, pink, coral.

3 gal \$24.00 Full

Shrub Roses

Floribunda, Hybrid Tea, Grandiflora

3 gal \$24.00

5 gal \$32.00

Knock Out Rose / Double Knock Out

Hot pink, red, or yellow flowers that bloom continually from spring to fall.

Mature at 3—4' high x 3' wide. In Stock / In Bloom

Heavy 3 gal \$24.00 ALWAYS

4 & 5 gal \$32.00 IN STOCK

Tree form 5 gal \$65.00 Patio Rose

■ SALIX

Willow

Salix babylonica

Babylon Weeping Willow

Fast grower with long reddish brown branches. Bright green leaves with silvery undersides.

Salix 'Niobe'

Niobe Golden Willow

One of the first to leaf out, and the last to drop its leaves. Striking yellow bark on young branches in winter. 40—50' tall x 20—30' wide.

15 gal \$135.00

2—2½" \$215.00

2½—3" \$245.00

Salix integra 'Hakuro-Nishiki'

Dappled Willow

Fast-growing deciduous shrub that matures at 20' tall and wide. New foliage is pink, matures to creamy white and green. Prefers wet soil conditions.

3 gal \$23.00

7 gal \$35.00

■ SAMBUCUS

Sambucus nigra 'Black Beauty'

Elderberry

Black Beauty Elderberry

PROVEN WINNER. Deep, rich purple foliage that gets darker as the summer progresses. Large groups of small, pink, lemon-scented flowers in June. Very hardy.

Sambucus nigra 'Black Lace'

Black Lace Elderberry

PROVEN WINNER. Wispy, threadlike foliage that is dark purple-black in color. A compact yet open form that resembles a Japanese Maple. In June, 10" clusters of pink flowers, lightly fragrant. Grows well in a container! Thrives in full sun or part shade. Matures at 5—6' high and wide.

3 gal	\$35.00
5 gal	\$45.00

■ SARCOCOCCA

Sarcococca hookeriana var. *humilis*

Himalayan Sweet Box

GOLD MEDAL WINNER. Slow-growing, shady, low-growing evergreen with fragrant white flowers. Spreads to 8'. Great ground cover.

1 gal	\$14.00
-------	---------

■ SCIADOPITYS

Sciadopitys verticillata

Umbrella-Pine

Japanese Umbrella-Pine

GOLD MEDAL WINNER. Slow-growing evergreen. Glossy needles. Matures to 20—30' Prefers moist, acid soil, full sun.

3—4'	\$300.00	
5—6'	\$450.00	Limited
6—7'	\$575.00	Limited

■ SKIMMIA

Skimmia japonica 'Berry Magic', *Reevesiana*

Japanese Skimmia

Slow-growing evergreen shrub. White spring flowers. Female has red fall berries. Need male for berries.

1 gal	\$20.00	
2 gal	\$32.00	Limited

■ SPIRAEA—Great Selection!

Spiraea

Mounding deciduous shrubs valued for interesting foliage and pink to white flowers March to May. Deer resistant.

- *x bumalda* 'Anthony Waterer'—rose-pink flowers, blue-green foliage 5'x5'.
- *x bumalda* 'Goldflame'—**PROVEN WINNER** - pink flowers, foliage opens bronze, fades to gold then green. 30" x 30".



- x Candy Corn
- x 'Gold Mound'—**PROVEN WINNER**—pink flowers. 2—3' x 3—4'. Low.
- japonica 'Little Princess'—**PROVEN WINNER**—deep pink flowers. 2' x 3'.
- japonica 'Magic Carpet'—vibrant red new leaves, pink flowers. 18" x 2'.
- japonica 'Neon Flash'—neon red flowers, burgundy fall. 3' x 3'.
- japonica Double Play® Big Bang—large pink flowers, yellow foliage. 3' x 3'.
- nipponica 'Snowmound'—small white flowers. 3—5' x 3—5'.

	3 gal	\$20—22.00	
<i>Specialty</i>	3 gal 18—24"	\$28.00	PROVEN WINNER

■ STEWARTIA—Paul's Favorite!

Stewartia pseudocamellia

Japanese Stewartia

GOLD MEDAL WINNER. Medium growing pyramidal broadleaf tree. White flowers in mid summer. Colorful flaking bark.

	15 gal	\$215.00	
<i>*Love This Tree!</i>	6—7' B&B	\$285.00	Limited
	2—2½" B&B	Call for pricing	

■ STYRAX

Styrax japonica

Snowbell

Japanese Snowbell

Medium growing deciduous broadleaf tree. White flowers in summer. Disease and pest free. Matures to 30' x 25'.

15 gal 1½" B&B	\$215.00
2—2½" B&B	\$245.00
2½—3" B&B	\$275.00

■ SYRINGA

Syringa patula 'Miss Kim'

Lilac

Miss Kim Lilac

Purple buds opening to fragrant, pale-blue flowers in May and June. Good border plant.

Syringa 'Bailbelle'

Tinkerbelle Dwarf Lilac

Fragrant deep pink flowers from May to June.

Syringa x Bloomerang®

Reblooming Lilac

PROVEN WINNER. Compact, fragrant. Reblooms throughout the summer til frost.

Matures at 5' tall.

Syringa prestoniae 'James MacFarlane',

James MacFarlane Lilac

Hardy single pink flowers two weeks after the common lilac.

Syringa prestoniae 'Donald Wyman'

Donald Wyman Lilac

Hardy plant, purple flowers late in season.

3 gal	\$28.00
4—5 gal, 24—36"	\$35.00
7 gal	\$55.00
3—4' B&B	\$65.00

Syringa reticulata 'Ivory Silk'**Japanese Tree Lilac**

GOLD MEDAL WINNER. Slow-growing, round deciduous broadleaf tree. Likes sun. Fragrant creamy white flowers in spring. Small shade or street tree. Matures at 20' tall.

15 gal	\$175.00	
2—2½"	\$235.00	*Single & Multi Stem*
2½—3"	\$285.00	

■ TAXODIUM**Taxodium distichum****Bald Cypress**

Deciduous conifer, tall tree growing to 80 feet.

7—8'	\$185.00
8—10'	\$235.00
10—12'	\$275.00

■ TAXUS—Come back to the 80's**Yew****Taxus x media 'Densiformis'****Dense Spreading Yew**

Bushy, dense, evergreen shrub. Dark green foliage. Very adaptable. Matures to 4'.

18—24" B&B	\$30.00	
24—30" B&B	\$40.00	Rependans Available!
30—36"	\$55—65.00	Call 215.283.3228

Taxus x media**Upright Yew**

- **'Hatfieldii'**—Pyramidal habit. Prefers shade or sun. Well drained soil. Matures to 12'.
- **'Hicksii'**—Moderate grower. Upright columnar. Dark green needles. Matures to 15'.
- **'Meyeri'**—Upright form with dark green foliage. Denser than 'Hicksii'. Matures to 15'.

18—24" B&B	\$28.00	
5 gal, 24—30" B&B	\$50.00	Or 7 gal
30—36" B&B	\$55—65.00	



Save the digital link for our wholesale book on your phone! Just take a photo of this QR code and you will be redirected to a PDF version of our wholesale book for your reference at any time! If you have any questions please call 215.283.3228. We look forward to seeing you!

■ THUJA

Arborvitae

Thuja occidentalis 'Elegantissima'

Elegantissima Arborvitae

Beautiful plant, medium growing. "DEER RESISTANT". Excellent sub for Green Giants.

7'	\$125.00
7—8'	\$175.00

Thuja occidentalis 'Nigra'

Dark Green American Arborvitae

Pyramidal form with dark green foliage year round. Matures to 20' x 6—8' wide.

	6'	\$75.00	
wire basket	7'	\$125.00	
wire basket	8'	\$185.00	Limited

Thuja occidentalis 'Smaragd'

Emerald Green Arborvitae

Compact, narrow, and pyramidal. Green foliage that does not discolor in winter. Matures to 15' x 3'.

	5 gal	\$30.00	
	4'	\$45.00	
wire basket	5' B&B	\$65.00	Call us for
wire basket	6' B&B	\$75.00	Larger Orders
wire basket	7' B&B	\$125.00	and Sizes
	8' B&B	\$185.00	

Thuja plicata 'Green Giant' (GOLD MEDAL WINNER)

Western Arborvitae

Fast-growing and upright with medium green foliage. Great for screening in a hurry! A **DEER RESISTANT** plant that matures at 30—50' tall x 12—16' wide.

5 gal, 3'	\$35.00	Home Grown
7 gal, 4'	\$45.00	Home Grown
7 gal, 5'	\$60.00	Home Grown
7 & 10 gal, 5—6'	\$85.00	
15 gal, 6—8'	\$125.00	
6' B&B	\$75.00	
7' B&B	\$125.00	
7—8' B&B	\$185.00	*Heavy!*
8—9'	\$235.00	
9—10'	\$275.00	
10—12'	\$325—375.00	
12—14'	Call for pricing	

QUANTITY DISCOUNTS
Call for large orders



.....
**WE
ARE
ARBS!**
.....

■ TILIA

Linden

Tilia cordata 'Greenspire'

A quick-growing conical deciduous tree with rounded leaves. Foliage turns yellow in the fall. This tree matures at 50' tall x 35' wide.

2—2½"	\$215.00
2½—3"	\$265.00

■ TSUGA

Hemlock

Tsuga canadensis

Canadian Hemlock

Pyramidal conifer with graceful arching branches. Tolerates shade well or sun with good drainage and protection from wind.

6—7'	\$165.00
7—8'	\$185.00

Call for larger sizes

Tsuga canadensis pendula

Sargent's Weeping Hemlock

A slow growing, spreading mound forming evergreen shrub with pendant branches. Must be staked for upright growth. Matures at 12' tall x 20' wide.

10 gal, 3—4'	\$215.00	
5—6'	\$425.00	<i>Specimen</i>

■ ULMUS

Elm

Ulmus americana 'Princeton', 'Allee'

American Elm

Native, vased-shaped canopy. Resistant to Dutch Elm disease. Fast-growing 50'—70' tall x 50' wide. Yellow fall color. Tolerates wet and dry sites.

Ulmus parvifolia 'Dynasty'

Chinese Elm

Rounded, vased shaped canopy. This tree will mature at 40—50' tall x 35—50' wide. It has a nice red fall color. Drought and deer tolerant. Will also withstand clay soil.

2—2½"	\$225.00
2½—3"	\$245.00
3—3½"	\$295.00

■ VIBURNUM

Viburnum

• *Viburnum carlesii* 'Compactum'

Compact Koreanspice Viburnum

Dense rounded pink buds opening in late April, fragrant white flowers. Matures to 6' x 6'.

• *Viburnum nudum* 'Winterthur'

Winterthur Viburnum

GOLD MEDAL WINNER. Lustrous, green foliage. White flowers in June. Fruit starts white, then turns pink, and then dark blue. Matures at 6—8' high x 4—6' wide.

• *Viburnum opulus*

European Cranberrybush Viburnum

Large, deciduous shrub. Dark green leaves turn yellow-red in fall. Attractive, red berries. Matures to 8'.

• *Viburnum plicatum tomentosum* 'Mariesii',

Doublefile Viburnum

'Shasta' (GOLD MEDAL WINNER), 'Summer Snowflake'

Compact, tiered horizontal growth habit. Bright red fruit in fall. 6' tall x 10' wide.

- **Viburnum x pragense**

Prague Viburnum

Loose, upright evergreen shrub. Leathery, dark-green leaves with brown undersides. Large yellow-white flowers followed by red fruits that turn black. Matures to 12'.

- **Viburnum x rhytidophylloides 'Alleghany'**

Alleghany Viburnum

Dark green leaves on dense, upright plant with white May flowers and bright red fruit.

- **Viburnum rhytidophyllum**

Leatherleaf Viburnum

Long, wrinkled evergreen leaves. Yellowish flowers in May. Matures to 10—15'.



3 gal	\$26.00
5 gal	\$30—35.00
7 gal	\$45.00
10 gal	\$65.00
3—4' B&B	\$65—85.00
4—5' B&B	\$85—105.00
5—6' B&B	\$125—145.00

*Add \$10 for a true
"Leatherleaf" tree

*Call for specific

MANY OTHERS, PLEASE CALL: 215.283.3228

■ VINES

- **Campsis x tagliabuana 'Madame Galen'**

Trumpet Vine/Creeper

A large fast growing clinging vine with stems 15 to 30 feet long. Salmon red flowers cover this deciduous vine. Prefers full sun.

- **Campsis radicans 'Flava'**

Yellow Trumpet Vine/Creeper

Vigorous climber that produces bright yellow flowers in summer. Hummingbirds are attracted to this deciduous vine. Quick growing to 25—30' long. Prefers full sun.

3 gal	\$25.00
5 gal	\$40.00

CLEMATIS

Clematis

- **'Henryi'**—large 6—7" white flowers in June to September, full sun, grows to 6—10'.
- **'Jackmanni'** - deep purple-violet flowers profusely cover this vine, full to partial sun, grows to 12'.
- **'Nelly Moser'**—pink flowers with a dark pink center, woody vine, full to part sun, grows fast to 15'.
- **'Sweet Autumn'**—produces large amount of fragrant creamy white flowers in fall, grows fast to 20'.

Nice	3 gal	\$22.00
	5 gal	\$60.00

- **Hydrangea anomala petiolaris**

Climbing Hydrangea

Quick-growing climbing vine that clings to surfaces via aerial rootlets. Deciduous, prefers full to partial sun. Beautiful white lace cap flowers in summer.

5 gal—staked	\$40.00
7 gal—espalier	\$85.00
15 gal	\$175.00

- **Lonicera x heckrottii 'Goldflame'**

Goldflame Honeysuckle

Semi-deciduous vine, prefers sun to part shade, fast growing to 15', beautiful fragrant red flowers with yellow interiors.

3 gal	\$20.00
-------	---------

■ VINES

WISTERIA

Wisteria

- **'Amethyst Falls'**—**GOLD MEDAL WINNER**. 8—10' long stems, repeat fragrant, purple flowers.
 - **'Texas Purple'**—fast-growing to 25', fragrant purple spring blooms.
- 5 gal—staked \$45.00

■ WEIGELA

Weigela

Weigela florida

- **'Fine Wine'**—**PROVEN WINNER**. Dark burgundy foliage, rich pink flowers 2x4'.
- **'Midnight Wine'**—**PROVEN WINNER**. Dwarf version of 'Wine & Roses', dark purple-burgundy foliage backs up intense rose-pink flowers. Grows 12—18" high x 18—24" wide.
- **'My Monet'**—**PROVEN WINNER**. Dwarf with green and white variegated foliage. Pink flowers in spring. Grows 12—18" high x 18—24" wide.
- **'Rainbow Sensation'**—**PROVEN WINNER**. Green and yellow variegated foliage, soft pink flowers in spring. Grows 3'—4' high x 3'—4' wide.
- **'Sonic Bloom'**—**PROVEN WINNER**. Blooms in spring, then reblooms til frost. Features red or pink flowers. Grows 4—5' high x 4—5' wide.
- **'Wine & Roses'**—**PROVEN WINNER, GOLD MEDAL WINNER**, full sun, purple-burgundy foliage, rose-pink flowers in spring. Grows to 5' high & wide.
- **'Spilled Wine'**—Hot pink-magenta flowers with wavy purple leaves. Spreading habit. Resists deer. Great for color in mass plantings. Grows 24—36" high & wide.

3 gal \$23—26.00
5 gal \$30.00 / \$35

■ YUCCA

Yucca filamentosa 'Golden Sword', 'Ivory Tower'

Adams Needle Yucca

Evergreen strap-like leaves. Flower spikes to 4'. Drought tolerant.

3 gal \$25.00
5 gal \$35.00

■ ZELKOVA

Zelkova serrata 'Green Vase' (GOLD MEDAL WINNER), 'Village Green' 'Mushashino' *Zelkova*

Insect and disease resistant vase-shaped tree. Bronze red fall color. Can grow to be 60' tall.

15 gal \$135
2—2½" \$215.00
2½—3" \$245.00
3—3½" Call for pricing.



All of our Shade & Flowering Trees
are grown in PA!

Locally grown & proud.

■ ANNUALS (Huge expansion for the 2021 season!)

We carry a large selection of blooming annuals in a range of sizes. If you are looking for a specific color or large order, please call in advance so we can assure your selection is available. Hanging baskets are also available.

SPRING / SUMMER FLOWERS—Call Paul Faulkner 215.283.3228

Holly Days Nursery represents many brand name flowering annuals, such as **Wave Petunias**, **Simply Beautiful**, and **Proven Winners**. Our selection of annuals changes weekly and seasonally. Following is a partial list:

• Alyssum	• Dianthus	• Marigold	• Petunias
• Begonia	• Dusty Miller	• New Guinea Impatiens	• Salvia
• Coleus	• Geraniums	• Pansies	• Wave Petunias
	4½" pots	18 per flat	\$43.00
	4½" square pots	15 per flat	\$36.00
	4½" round pots	12 per flat	\$48.00
	Market Packs	606 per flat	\$19.50

FALL FLOWERS

Chrysanthemums, Cabbage, Kale 9" Heavy \$5.50

■ GRASSES - large assortment

The following is a partial list of grasses we carry, our selection changes weekly and seasonally, please call for availability.

- *Calamagrostis* 'Karl Foerster'—full sun, blooms June–Oct., fast growing to 4–5'.
- *Calamagrostis* 'Overdam'—bright silver variegated foliage, grows to 2–3'.
- *Festuca* 'Elijah Blue'—steel blue foliage, full sun/part shade, grows to 12–18".
- *Miscanthus* 'Adagio'—Compact, mounds with pentifol blooms overarching narrow foliage, grows 3–4'.
- *Miscanthus sinensis* 'Gracillimus'—(Maiden Grass) full sun, bronze-red plumes August–winter, fine textured green foliage, grows to 6–8' tall and 3–5' wide.
- *Miscanthus sinensis* 'Morning Light'—Fine blades variegated green/white, bronze-red plumes, grows to 4'.
- *Miscanthus sinensis* 'Silberfeder'—long arching leaves, silver plumes in August, grows quickly to 6–9'.
- *Miscanthus sinensis* 'Strictus'—(Porcupine Grass) erect and clump forming, horizontal yellow bands, copper plumes in October, grows to 7'.
- *Miscanthus sinensis* 'Variegatus'—varigated blades of green / white, copper colored plumes in fall, grows to 6'.
- *Panicum* 'Heavy Metal'—Blue Switch Grass—Upright clump forming foliage is striking powder blue through October.
- *Panicum* 'Shenandoah'—Red Switch Grass—Bright red panicum begins showing color in June. 2–3'.
- *Pennisetum alpecurioides* 'Cassian'—Beautiful flowing fountain grass with creme pink bottlebrush plumes July to September.

- **Pennisetum alpecuroides**—**Fountain Grass**—Clumping perennial grass. Dark green blades with buff blooms late summer.
- **Pennisetum alopecuroides 'Hameln'**—(Dwarf Fountain Grass) full sun, mounded grass, mauve plues July-September, grows to 2–3'.
- **Pennisetum setaceum 'Rubrum'**—(Annual) burgundy foliage with pink blooms, plants only last until frost. Gives planters pizzazz!! (1 gallon only)

1—2 gal	\$10—12.00
3 gal heavy	\$15.00
- **Carex bunny blue**—Blue grey foliage with clumping habit. Grows in shade to part sun.
- **Carex evergold**—Variegated Japanese sedge—Striped dark green and gold foliage. 10".
- **Carex ice dance**—Wide graceful leaves with prominent creamy-white margins. 12". Grows in sun and part shade.
- **Festuca Elijah blue**—Steel blue foliage is heat tolerant 8".
- **Hakonechloa Aureola**—Bright yellow and green variegated foliage. 12". Grows in sun and part shade.
- **Pennisetum Little Bunny**—Miniature pennisetum with tan plums. 10".
- **Schizanthus 'Standing Ovation' PPAF**—Little Bluestem—Upright native blue colored grass with accents of red, turns fiery red in fall, and tan in winter. Deer resistant. 3–4'.

1 gal	\$10
-------	------

■ PERENNIALS

Huge in Bloom! - Quantity Discount!

Holly Days Nursery carries a great selection of perennials ALL THE TIME! We have perennials for all seasons. We always have whatever is currently in bloom!! If we don't have it we'll get it ASAP. Stop by & check out our major perennials expansion for the 2021 season and beyond. We will have an expanded selection of perennials, hostas, ferns, and ground cover. We so many many available and much more than this list. Be sure to check with your nursery specialist.

1 gal economy—\$6.00 1 gal—\$8.00 2 / 3 gal—\$12.00 *Specialty!*

- **Achillea (Yarrow)**—likes sun. Lilac pink, bright yellow, and a range of pastel colors.
- **Agastache (Hyssop)**—likes sun. Flowers in July.
- **Aquilegia (Columbine)**—likes part shade. Multicolored red & yellow or blues & white.
- **Artemisia Silvermound**—lacy, silvery foliage, prefers full sun to part shade, 18".
- **Asclepias (Butterfly Weed)**—likes sun. Yellow or orange flowers in summer. Attracts butterflies.
- **Aster**—likes sun. Crimson red and deep purple colors available.
- **Astilbe**—prefers part shade. White, pink, dark red, purplish red, raspberry colors.
- **Baptisia australis (False Indigo)**—likes sun or part shade, blue spikes of pea-shaped flowers in May—June, grows to 3–6'.
- **Campanula (Bell Flower)**—likes sun. Purple blue and white varieties.
- **Chelone lyonii (Turtlehead)**—Part sun, deep pink flowers on 3' spikes summer to fall, 24–36".

- **Chrysanthemum** (Daisy)—likes sun. White with yellow centers.
- **Coreopsis** (Tickseed)—likes sun. Yellow and cream yellow varieties.
- **Crocsmia**—likes sun. Red trumpet like flowers in summer.
- **Delasperma**—likes sun. Very low growing, succulent like with pink, red, purple flowers.
- **Delphinium**—Assorted cultivars. Prefers sun, tall stalks fo blue or white flowers, May-June.
- **Dianthus** (Maiden Pinks)—likes sun. Pink, magenta, or white flowers.
- **Dicentra** (Bleeding Hearts)—like part shade. Red and white flowering plants available.
- **Echinacea** (Cone Flower)—likes sun. Pink and white varieties.
- **Gallardia** (Blanket Flower)—likes sun. Large flowering apricot, red, or yellow flowers in summer.
- **Gaura**—(Butterfly flower) likes sun. Pink and white varieties.
- **Geranium**—low growing perennial. Pink, white, purple, or blue flowers. Likes sun/part shade.
- **Helenium**—Yellow/red flowers in late summer or fall.
- **Helleborvs**—White, pink, or maroon flowers in late winter early spring. Part shade to shade.
- **Hemerocallis** (Daylily)- likes sun to part shade, many different varieties available.
- **Heuchera** (Coral Bells)—likes sun to part shade. Colorful foliage. Huge selection!
- **Hibiscus**—huge, tropical flowers in summer. Red, white, yellow, and pink flowers.
- **Iris**—likes sun/part shade. Taller grass like foliage with white, purple, and blue flowers.
- **Lamium** (Dead Nettle)—likes part shade/shade. Low growing ground cover with pink purple or white flowers.
- **Lavandula** (True Lavender)—likes sun. Large selection.
- **Liatris** (Gay Featler)—likes sun/part shade. Large white or purple flower spikes in summer. 36" tall.
- **Ligularia**—likes part shade. Large leafed plant with yellow orange flowers in summer.
- **Ludine**—likes sun/part shade. Blue or pink flower spikes in summer. 15" tall.
- **Monarda** (Bee Balm)—likes sun/part shade. Attracts butterflies & hummingbirds. Many varieties pink, violet, and magenta flowers.
- **Nepta** (Catmint)—likes sun/part shade. Great perennial with blue flowers, grey green foliage. Long blooming.
- **Perovskia** (Russian Sage)—likes sun, intense blue flowers, with fragrant silver-blue foliage, cultivars are 24—48".
- **Phlox paniculata** (Garden Phlox)—likes sun to part shade, blooms July-September. Many varieties available.
- **Phlox subulata** (Mountain Pinks)—likes sun to part shade.
- **Rudbeckia** (Blackeyed Susan)—likes sun.
- **Salvia**—likes sun. Purple and white varieties available. Huge selection!
- **Sedum**—likes sun. Upright and ground cover varieties available. Huge selection!
- **Tiarella** (Foamflower)—likes part shade/shade. White flower spikes on cool foliage.
- **Veronica** (Speedwell)—likes sun/part shade. Blue or pink flower spikes. Approximately 15—22" tall.
- **AND LOTS MORE!**

**Check out our new and improved Perennial Area!
50% expansion! Send us your list.**

■ PERENNIALS Great perennials for shady spots.

FERNS—Expanded selection!

- **Athyrium filix-femina var. angustum** ('Lady in Red')—soft green fronds held on deep red/burgundy stems. U.S. native. H: 18—30" W: 18—24"
- **Athyrium niponicum** (Japanese Painted Fern)—multi-colored display of silver/maroon/green. One of the most popular ferns. Super hardy. 2004 Perennial Plant of the Year. H: 2—3' W: 2—3'
- **Athyrium niponicum pictum** (Painted Japanese Fern)—pale silvery-green and dark maroon fronds and red stems, full to part shade, 24".
- **Dryopteris erythrosora 'Brilliance'** (Autumn Fern)—new spring growth appears in brilliant cinnamon-bronze and fades to bright green. Mounding habit. H: 18—24" W: 18—24"
- **Dryopteris erythrosora** (Autumn Fern)—broad, triangular fronds, coppery pink growth in fall, part shade, 18—24".
- **Dryopteris marginalis** (Eastern Wood Fern)—U.S. native groundcover form of bright green foliage. Drought-tolerant once established. H: 12—18" W: 12—18"
- **Dryopteris x australis** (Dixie Woodfern)—large upright fern of bright green. Perfect for the rear border in shaded areas. U.S. native. H: 3—4' W: 2—3'
- **Matteuccia pennsylvanica** (Ostrich Fern)—tall, feathery fronds, fast-growing, part shade to shade, 36".
- **Matteuccia struthiopteris** (Ostrich Fern)—large stately fern with over sized bright green fronds. U.S. native selection. H: 3—6' W: 5—8'
- **Onoclea sensibilis** (Sensitive Fern)—groundcover form of mint green fronds, spreads by rhizome in moist soils. U.S. native. H: 1—2' W: 1—2'
- **Osmunda cinnamomea** (Cinnamon Fern)—bright green arching fronds. Summer fronds appear as erect cinnamon-brown spikes. Part shade. U.S. native. H: 2—5' W: 2—3'
- **Osmunda cinnamomea** (Cinnamon Fern)—tall, upright green fronds surround cinnamon stick-like inner fronds which remain throughout the winter, part shade, 30—48".
- **Osmunda regalis** (Royal Fern)—upright fronds of medium-green with a softer texture perfect for accenting the shade garden. U.S. native. H: 3—4' W: 2—3'
- **Polystichum acrostichoides** (Christmas Fern)—hardy evergreen, dark green fronds, shade to part shade, 24".

1 gal
2/3 gal

\$11.00
\$15.00

*Most readily available

HOSTA—Expanded selection!

Huge selection, new plants arrive weekly

- **Aureo-Marginata**—deep green foliage with a golden edge, lavender flowers, 12—18".
- **August Moon**—large round golden leaves, white flowers, sun tolerant, 20".
- **Elegans**—large blue-grey leaves, with white flowers, 28".
- **Earth Angel**—large Hosta of soft green heart-shaped leaves with wide creamy yellow margins with pale lavender flowers. H: 28—30" W: 36—40"
- **Francee**—green heart shaped leaves with white margins, lavender flowers, 18".

- **Francee**—deep emerald with a well-defined narrow white edge. Can handle some sun H: 14—18" W: 24—30"
- **Frances Williams**—textured blue green leaves with gold edges, white flowers, 18—28"
- **Guacamole**—glossy dark chartreuse with a wide deeper green margin. Occasional streaks of light green and yellow. H: 16—20" W: 2—3"
- **Halcyon**—long heart-shaped leaf of icy blue. Among the best for slug resistance. H: 16—18" W: 30—36"
- **Krossa Regal**—large frost blue foliage, white flowers on 5' stalks, 30"
- **Krossa Regal**—award-winning selection of sturdy frosty-blue/green foliage. Large flower. Lavender summer flowers on tall scapes. H: 30—36" W: 4—6'
- **Minuteman**—deep emerald leaves with wide pure-white margins. H: 16—18" W: 24—30"
- **Patriot**—the classic deep-green with white variegation Hosta. H: 16—18" W: 24—30"
- **Patriot**—dark green foliage with gleaming white margins, tolerates heat, compact, 15—18"
- **Sieboldiana 'Elegans'**—big blue puckered leaves. the classic blue Hosta. White flowers in mid summer. H: 18—20" W: 3—4'
- **Sum and Substance**—huge gold/green leaves. Gargantuan habit. Can tolerate almost full sun. H: 24—30" W: 5—6'
- **Sum and Substance**—large chartreuse green thick leaves, lavender flowers, 24"
- **Wide Brim**—green leaves with wide irregular margins of creamy yellow, lavender flowers, 18"

1 gal	\$10.00
2 gal	\$15.00

Hard to find varieties! Proven Winners is #1—only \$12.00 each!!

Edibles ask for Tammey

Call for availability and pricing

■ **BERRIES**

- **Rubus**—*Assorted Dwarf and Standard Varieties*—2 gal
- **Vaccinium**—*Assort. Dwarf and Standard Varieties*—3 gal
- **Vitis**—*Assorted Seedless Varieties*—2 gal

*Raspberry
Blueberry
Grape*

■ **FRUIT TREES**

- **Apple, Cherry, Fig, Peach, Pear, Persimmon, Asst. varieties.** 5 & 7 gal & B&B
- **Apple & Pear 4-in-1 Combo.** 7 gal • **Espalier Apples**—15 gal or B&B
- **Colonnade Apples**—7 & 10 gal

Lawn Care/Grass Seed

	<u>SIZE</u>	<u>PRICE</u>
• Contractors Mix: fast germination, combination of annual rye and perennial rye.		
	25 lbs	\$40.00
	50 lbs	\$68.00
• Premium Fescus Mix: great for establishing new lawns, nice seed containing a blend of turf-type, tall fescue.		
	25 lbs	\$60.00
	50 lbs	\$110.00
• Sun & Shade Mix: a great seed for full sun and part shade areas, contains many seed varieties (Rye, Bluegrass, Fescue) that do well in all areas.		
	25 lbs	\$68.00
	50 lbs	\$128.00
• Shade Mix: a wonderful seed for the shady location, contains mostly Fescues along with Perennial Rye to speed up the germination process.		
	25 lbs	\$68.00
	50 lbs	\$128.00
• Sod —Fescue/Kentucky Bluegrass Mix—500 sq.' \$230 /pallet 24 hour notice		
• Straw		\$9.50 / bale
• Penn Mulch —covers 700 sq.' ¹	50 lbs	\$25.00
• Straw Matting	8' x 112'	\$54.00 * <i>SPECIAL</i>
• Treflan 5 gal	31.3 lbs	\$45.00
• Roots	<i>Fertilizer</i> 25 lbs	\$32.00

**We carry a good selection of
fertilizers, weed preventers,
herbicides, and pesticides.**

Call for availability and pricing.





Aquatics

Ask for Chuck

We are the area's largest and most complete pond and water garden center!
Our staff of pond and water garden specialists will help with all your issues from algae, clarity, design, and pond health.

■ Complete Product Lines:

Pond Kits • Pondless Waterfall Kits • Waterfalls
Fountains • Skimmers • Pressurized Filters
UV Sterilizers • Pumps up to 20,000 GPH Available
PVC Flex Tubing up to 3" • Fittings
45 mil EPDM Liner • Underlay

■ Fish:

State of the Art 'Fish Facility' houses:
Imported & Domestic Koi • Fancy Gold Fish
• Comets • Sarasa • Hi-Fin Sharks
• Snails • Tadpoles



We have a large selection of aquatic plants:

Hardy • Tropical • Carnivorous • Native
Water Lilies • Lotus • Floaters • Ornamentals

*****ALL SIZES OF POND LINER ARE AVAILABLE!*****

Mulch

We carry the best!

Delivery = Minimum 5 yard - Local area - \$25.00

We can deliver 6 days a week for you.

We Stock the BEST possible mulches available. There is a difference.

	<u>Price per Yd.</u>	
• Triple Ground Mulch	\$25.00	Holds moisture
Root & Bark Mulch Blend		Excellent for beds
• 'Black Night'™ —colored black mulch	\$28.00	Black Dyed hardwood
“The Original”—The Best Black Available		
Keeps color most of season		
• “Beautiful Brown” —colored brown mulch	\$30.00	Dyed hardwood mulch
• Hemlock Mulch	\$40.00	Premium mulch
• Nutri Peat	\$44.00	
• Leaf Mulch	\$14.00	Great Woods Mulch
• 'Wood Carpet' —playground chips	\$36.00	Certified Chips
• Tree Chips	\$12.00	Chipped Trees

Custom Blended Soil

• Topsoil —screened	\$29.00	Filler, lawn grading
• Premium Planting Soil	\$36.00	50% Topsoil—50%
		Blended Compost Mix / Mushroom Soil
• Mushroom Soil	\$34.00	2-2-3 Analysis
• Premium Compost / Earthmate	\$34.00	Organic compost
• Unscreened course dirt	\$12.00	Fill dirt

We screen & custom blend our soil.

We deliver direct to job sites six days a week in our own trucks.

Call for availability and pricing... 215.283.3228.

Bulk Stone

Per Bucket or 1 Cubic Yard / Avg. 1.2 Ton

- ¾ Clean Stone—Gray \$30.00
- ¾ Modified Stone—Gray \$25.00
- ¾ Clean—White \$46.00
- Screening (Grit) \$25.00
- Red Tipple 3/8" \$46.00
- Goose Eggs 2—4" (White & Tan Stones) \$68.00
- River Jack ¾—1" (Gray, Tan, Red, Brown) \$70.00
- River Jack 1—3" (Gray Tan, Red, Brown) \$80.00
- River Jack 5—12" (Gray, Tan, Red, Brown) \$105.00
- Concrete Sand / Paver Sand (Polymetric) \$34.00
- Bar Sand (Mortar Mix) \$34.00

Half Buckets—Add \$3.00

Belgium Stone

Huge Selection! Best Price Around!!

	<u>Cost Per</u>	<u>Pallet</u>	<u>Size</u>
--	-----------------	---------------	-------------

*Amazing selection, price, & durability
for all types of concepts, plans, & projects!*

Landscaping Supplies

Gator Bags

- 14 gal (brown) \$20.00
- 20 gal (green) \$24.00

Soaker Hoses

- 50' \$14.50
- 75' \$25.50

Tree Stakes

- 1 x 2 x 5' \$2.00
- 2 x 2 x 6' \$3.00

Aluminum Landscape Edging

	<i>Commercial</i>	<i>Residential</i>	
• 8' Natural Aluminum	\$13.50	\$12	Includes 3 stakes
• 8' Black Aluminum	\$15.50	\$13	Includes 3 stakes
• 8' Paver Restraint (flexible)	\$10.00		Includes 1 splicer
• 8' Paver Restraint (heavy duty)	\$10.00		Includes 1 splicer

Burlap

- 32" x 32" \$1.25
- 48" x 48" \$2.25
- 60" x 60" \$3.75
- 72" x 72" \$5.00

Landscape Fabric

- 3 x 50' typar \$16.50
- 3 x 100' typar \$32.00
- 75" x 300' \$165.00
- GeoTextile \$0.25/sq'
(12½' wide)
- Full Rolls \$385

Sod Staples

- \$2.25 per bag of 24
- Plastic Twine
\$28.00
- Sisal Twine
1, 2, or 3 ply
\$25.00

Super Sand & Gator Dust

ALWAYS IN STOCK

• Gator Maxx II 50 lbs—G2	\$28.00	Beige, Gray —(wide or tight joint)
• Gator Glue 28 oz. tube	\$10.00	Concrete adhesive
• Gator Nails 50 lbs / box	\$75.00	10" galvanized nails
• Gator Patio Edging—Ridgid or Flex—8'	\$12.50	

Path & Wall Stone

Pattern Flagstone 1½"

	<u>Cost Per Sq Ft.</u>
• Full Range, natural cleft 1.5"	\$5.50/sq ft
• Full Range, Thermal 1.5"	\$7.50/sq ft
• Full Range, Thermal 1"	\$6.75/ sq ft
• Treadstock 12—14" wide x 6'	\$85 a piece

Irregular Stand-Ups 1½" - 2½"

• Flagstone—Gray or Lilac	\$8.00/ sq ft	\$330.00/Pallet
• West Mountain	\$10.00/ sq ft	\$375.00/Pallet

Palletized Natural Wall Stone

	<u>½ Pallet</u>	<u>Pallet</u>
• PA Fieldstone 1—4"—Gray or Red	\$150.00	\$235.00 (1.5 ton)
• PA Fieldstone 3—6"	—	\$235.00 (1.5 ton)
• Snap Edge Blue 1—3" or 3—6"	\$150.00	\$235.00 (1.5ton)
• Snap Edge Lilac 1—3" or 3—6"	\$150.00	\$235.00 (1.5 ton)
• Tumbled Blue Stone (The Best) 2"	—	\$425.00 (1.5 ton)
• West Mountain 1—4" or 4—6"	\$150.00	\$235.00 (1.5 ton)

Natural Garden Path Steppers

	<u>Small</u>	<u>Medium</u>	<u>Large</u>
• PA Fieldstone—per pallet	\$245.00	\$265.00	\$300.00
• West Mountain Steppers—per pallet	\$250.00	\$300.00	\$350.00

Landscape Boulders

ALWAYS IN STOCK

Premium, Fieldstone, Hilltown Red Boulders—sold individually						
12—18"	18—24"	24—30"	30—40"	40—50"	50—60"	60—72"
\$25.00	\$40.00	\$60.00	\$90.00	\$150.00	\$250.00	\$300.00

Add \$20.00* for West Mountain, Moss Rock, and Jericho

**Lots of Specialty Steppers
and Boulders**

Stone Age Outdoor Living Systems

We stock and distribute
a full line of modular outdoor
fireplace and outdoor kitchen kits!



These complete kits include:

- hearth
- firebrick
- support legs
- chimney sections

Available in 24", 36", 48" and See-Thru models.
Firepits and Pizza Ovens also available.

- 36" Contractor Series — \$2255
- 48" Contractor Series — \$2640
— Chimney Extensions — \$80

Please visit thefirefarm.com for additional details.

If you have any questions,
please email: tammey@hollydaysnursery.com

Coverage Tables

GROUNDCOVER SPACING TABLE

<u>Spacing</u>	<u>Flat of 50 covers:</u>
----------------	---------------------------

6"	12 sq ft
8"	22 sq ft
10"	35 sq ft
12"	50 sq ft

- Calculate the number of square feet of the area you wish to cover.
- Decide on the type of ground cover you wish to plant.
- Check spacing recommendations found on the tag or signage for that ground cover.
- Divide your square footage by the square foot coverage above according to your spacing choice. This will give you the number of flats you will need to cover the space.

FOR SOIL OR MULCH

1 cubic yard will cover the following:

<u>Sq. Feet</u>	<u>At Depth</u>
324 sq. feet	1" depth
162 sq. feet	2" depth
103 sq. feet	3" depth
81 sq. feet	4" depth
63 sq. feet	5" depth
34 sq. feet	6" depth
9 sq. feet	12" depth

FOR STONE OR GRAVEL

1 cubic yard will cover the following:

<u>Sq. Feet</u>	<u>At Depth</u>
220 sq. feet	1" depth
110 sq. feet	2" depth
73 sq. feet	3" depth
55 sq. feet	4" depth
44 sq. feet	5" depth
37 sq. feet	6" depth



1201 Horsham Rd.
Ambler, PA 19002

PRSR STD
US POSTAGE PAID
FORT WASHINGTON, PA
PERMIT NO. 8144

