

LEGEND

— W — W —	WATER	☼	LIGHT POLE
— G — G —	GAS UNDERGROUND	⊠	WATER GATE VALVE OR GAS VALVE BOX
— S — S —	STORM SEWER	⊙	MANHOLE
— SAN —	SANITARY SEWER	⊕	HYDRANT
— T — T —	TELEPHONE UNDERGROUND		
— E — E —	ELECTRIC UNDERGROUND		
— CoTV —	CABLE TV		

PLAN KEY

- ⊠ SAW CUT EX ASPHALT DRIVEWAY
- ⊡ REMOVE AND REPLACE EXISTING CURB & GUTTER, PAVEMENT, SIDEWALK & PART OF DRIVEWAY APRON
- ⊢ REMOVE TREES - CLEAR AND GRUB
- ⊣ REMOVE EXISTING PAVEMENT

DEMOLITION NOTES

1. CONTRACTOR IS RESPONSIBLE FOR VERIFYING ALL UTILITIES PRIOR TO BEGINNING DEMOLITION OPERATIONS. NOTIFY DIGGERS HOTLINE PRIOR TO START OF DEMOLITION.
2. CONTRACTOR TO DISPOSE OF ALL MATERIALS OFF SITE, UNLESS DIRECTED OTHERWISE.
3. ALL MATERIALS, UTILITIES, AND PAVEMENT DAMAGED BY THE CONTRACTOR AS A RESULT OF THE DEMOLITION OPERATIONS SHALL BE REPAIRED BY THE CONTRACTOR AT NO ADDITIONAL COST TO THE OWNER.
4. CONTRACTOR SHALL PROTECT ALL EXISTING PUBLIC AND PRIVATE FACILITIES (INCLUDING BUT NOT LIMITED TO ELECTRICAL, WATER, SANITARY, SIDEWALKS, PAVING, ETC.) THAT IS TO REMAIN.
5. REMOVAL OF AN ASPHALTIC SURFACE, WHERE AN ABUTTING ASPHALTIC SURFACE IS TO REMAIN IN PLACE, SHALL REQUIRE SAW CUTTING AN EDGE.



SCALE : 1" = 30' (24 X 36)
1" = 60' (11 X 17)

<p>ISSUANCE/REVISION</p> <p>PLANNING & ZONING SUBMITTAL</p>	<p>DATE</p> <p>04-22-15</p>
<p>818 N Meadowbrook Ln Waunakee, WI 53597 phone (608) 849-9378 fax (608) 237-2129</p>	
<p>PROFESSIONAL ENGINEERING</p>	
<p>CAPITOL VIEW AT OAK PARK EX. CONDITIONS / DEMOLITION PLAN</p> <p>5817 HALLEY WAY MADISON, WISCONSIN</p>	
<p>C100</p>	

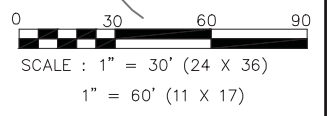
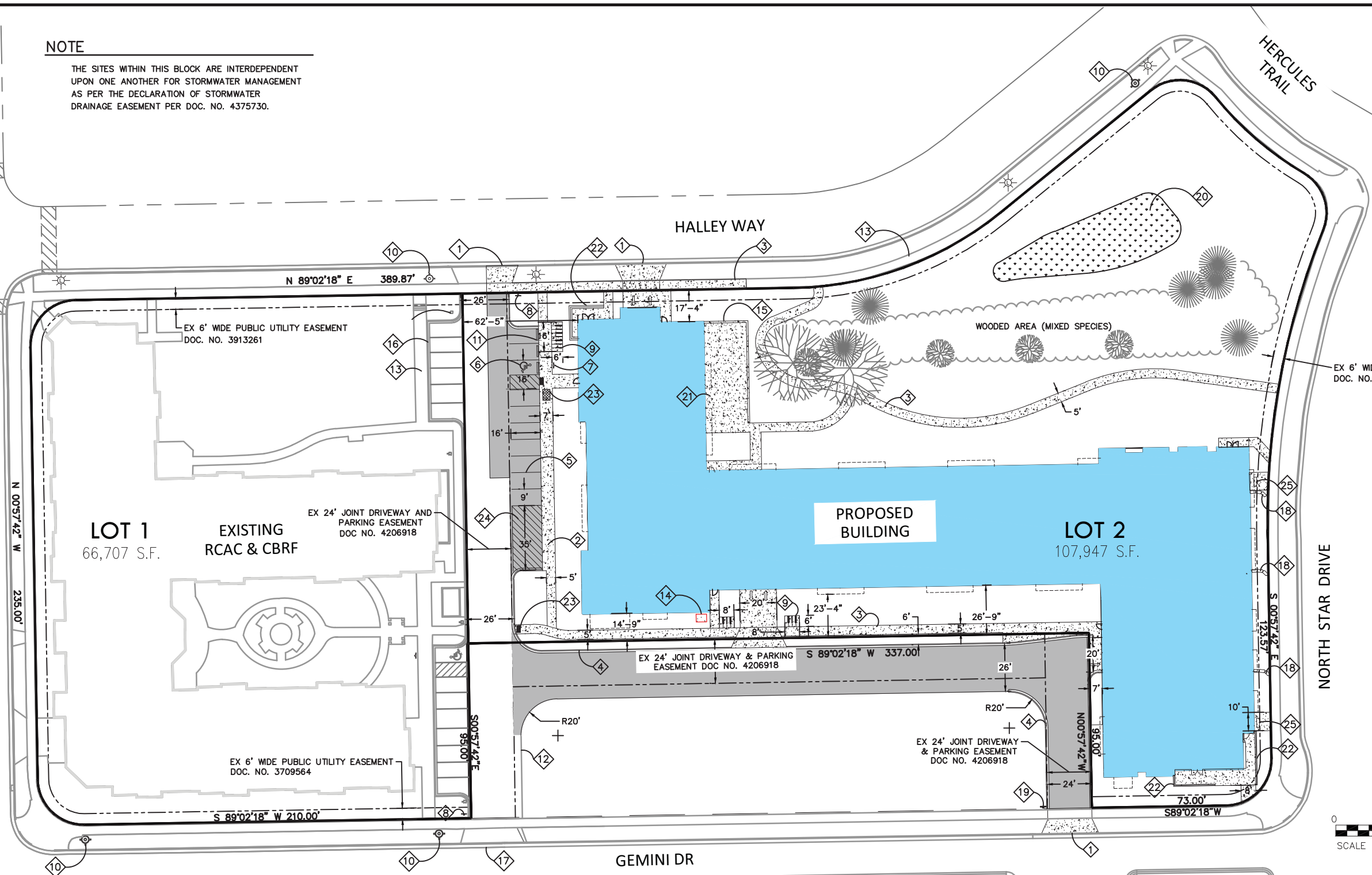
NOTE
 THE SITES WITHIN THIS BLOCK ARE INTERDEPENDENT UPON ONE ANOTHER FOR STORMWATER MANAGEMENT AS PER THE DECLARATION OF STORMWATER DRAINAGE EASEMENT PER DOC. NO. 4375730.



ISSUANCE/REVISION	DATE
PLANNING & ZONING SUBMITTAL	04-22-15

818 N Meadowbrook Ln
 Waunakee, WI 53997
 phone (608) 849-9378
 fax (608) 237-2129

PROFESSIONAL ENGINEERING LLC



PLAN KEY

- 1 NEW DRIVEWAY APPROACH IN ACCORDANCE WITH M.G.O. 10.08 (F). CONTRACTOR TO OBTAIN PERMIT FROM CITY TO WORK IN THE RIGHT-OF-WAY
- 2 THICKENED EDGE SIDEWALK
- 3 SIDEWALK
- 4 18" CURB AND GUTTER
- 5 PAVEMENT STRIPING, TYP.
- 6 VAN ACCESSIBLE STALL, TYP.
- 7 VAN ACCESSIBLE PARKING SIGN, TYP.
- 8 EX STOP SIGN

- 9 BICYCLE RACK, TYP. (MADRAX SHARK - MODEL: SHK-SNG)
- 10 EX HYDRANT
- 11 PRECAST CURB STOP, TYP
- 12 EX ASPHALT
- 13 EX SIDEWALK
- 14 TRANSFORMER PAD
- 15 CONCRETE RETAINING WALL - SEE ARCH. PLANS
- 16 EX CURB AND GUTTER
- 17 EX DRIVEWAY APRON

- 18 BOULDER RETAINING WALL, TYP.
- 19 7' HIGH STOP SIGN
- 20 RAINGARDEN
- 21 OUTDOOR TERRACE - SEE ARCHITECTURAL PLANS
- 22 PRIVACY WALL WITH SIGNAGE - SEE ARCHITECTURAL PLANS
- 23 ACCESSIBLE CURB RAMP W/ DETECTABLE WARNING STRIP
- 24 LOADING ZONE - PAVEMENT STRIPING
- 25 BENCH, BY OWNER

PAVEMENT KEY

- ASPHALT PAVEMENT
- CONCRETE
- PROPOSED BUILDING

SITE INFORMATION

SITE ADDRESS: 5817 HALLEY WAY

LEGAL DESCRIPTION: LOT 2 OF CERTIFIED SURVEY MAP NO. 12324 AS RECORDED IN VOL. 76, PG 226, OF C.S.M.'S AS DOC. NO. 4377275, IN THE SE 1/4 AND THE SW 1/4 OF THE NW 1/4 OF SECTION 11, T7N, R10E, CITY OF MADISON, DANE COUNTY, WISCONSIN

SITE ACREAGE TOTAL: 107,947 SF (2.48 ACRES)

NUMBER OF BUILDING STORIES = 4

BUILDING HEIGHT = 56'-3"

BUILDING AREA = 153,238 SF (38,870 SF FOOTPRINT)

TYPE OF CONSTRUCTION: VA

NUMBER OF EXTERIOR PARKING STALLS: 10 (1 HC)

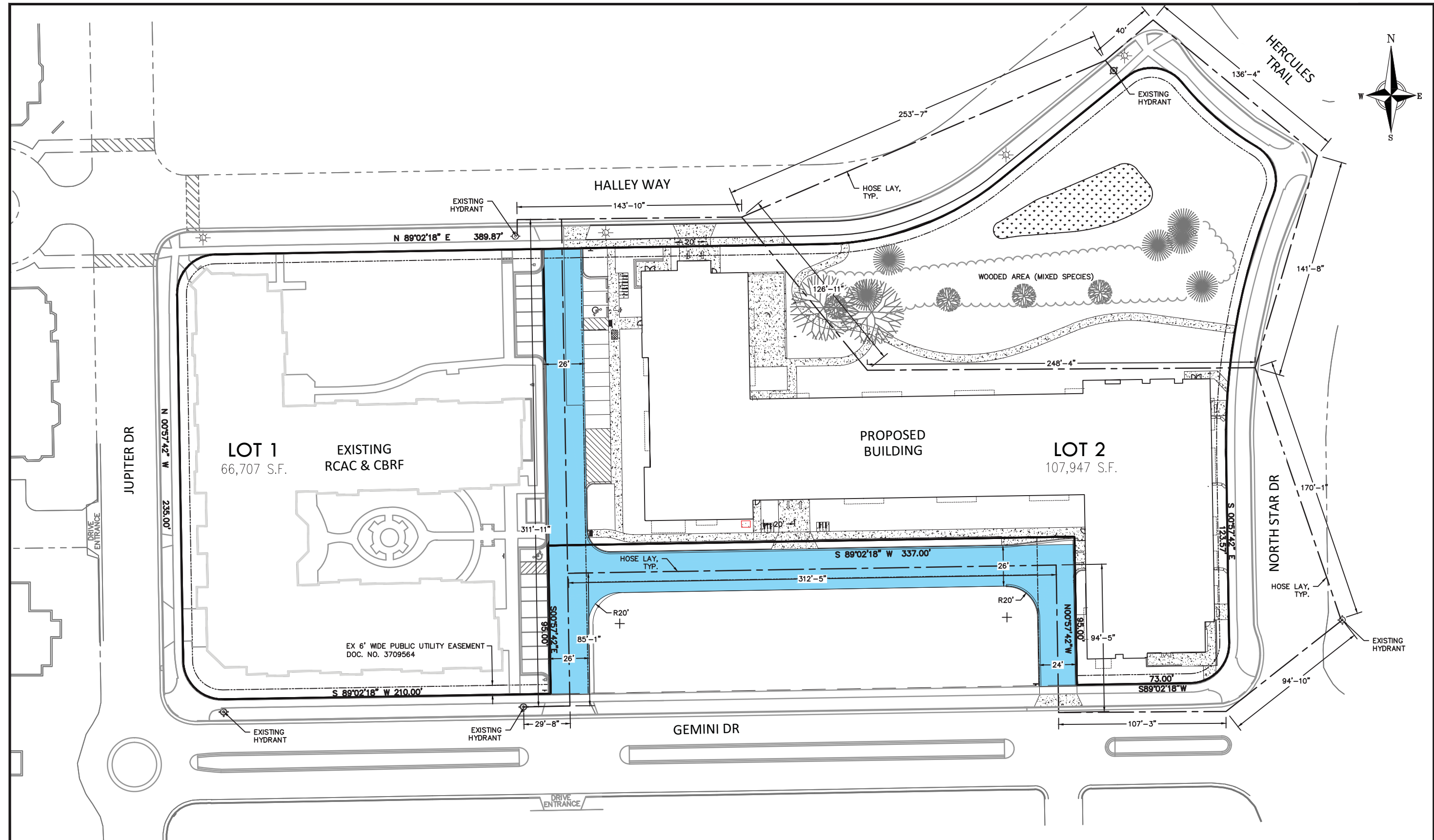
NUMBER OF UNDERGROUND PARKING STALLS: 99 (4 HC)

TOTAL NUMBER OF PARKING STALLS: 109 (5 HC)

TOTAL BIKE PARKING: 93
 41 INTERIOR
 36 FUTURE INTERIOR
 16 EXTERIOR

CAPITOL VIEW AT OAK PARK
SITE PLAN
 5817 HALLEY WAY
 MADISON, WISCONSIN

C101



ISSUANCE/REVISION	DATE
PLANNING & ZONING SUBMITTAL	04-22-15

818 N Meadowbrook Ln
 Waunakee, WI 53997
 Phone (608) 849-9378
 Fax (608) 237-2129

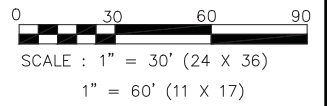
PROFESSIONAL ENGINEERING LLC

CAPITOL VIEW AT OAK PARK
FIRE ACCESS PLAN
 5817 HALLEY WAY
 MADISON, WISCONSIN

C102

KEY

FIRE LANE



No.	ELEVATION	LOCATION
BENCHMARK 1	991.99'	TOP NUT OF HYDRANT, N.W. CORNER OF GEMINI DRIVE AT JUPITER DRIVE
BENCHMARK 2	999.28'	TOP NUT OF HYDRANT, NORTH SIDE OF GEMINI DRIVE, 230' EAST OF JUPITER DRIVE
BENCHMARK 3	1004.69'	TOP NUT OF HYDRANT N.E. CORNER OF HALLEY WAY AT HERCULES DRIVE

DATE
04-22-15

ISSUANCE/REVISION
PLANNING & ZONING SUBMITTAL

818 N Meadowbrook Ln
 Waunakee, WI 53597
 phone (608) 849-9378
 fax (608) 237-2129

PROFESSIONAL ENGINEERING LLC

CAPITOL VIEW AT OAK PARK
GRADING PLAN
 5817 HALLEY WAY
 MADISON, WISCONSIN

C200

GRADING NOTES

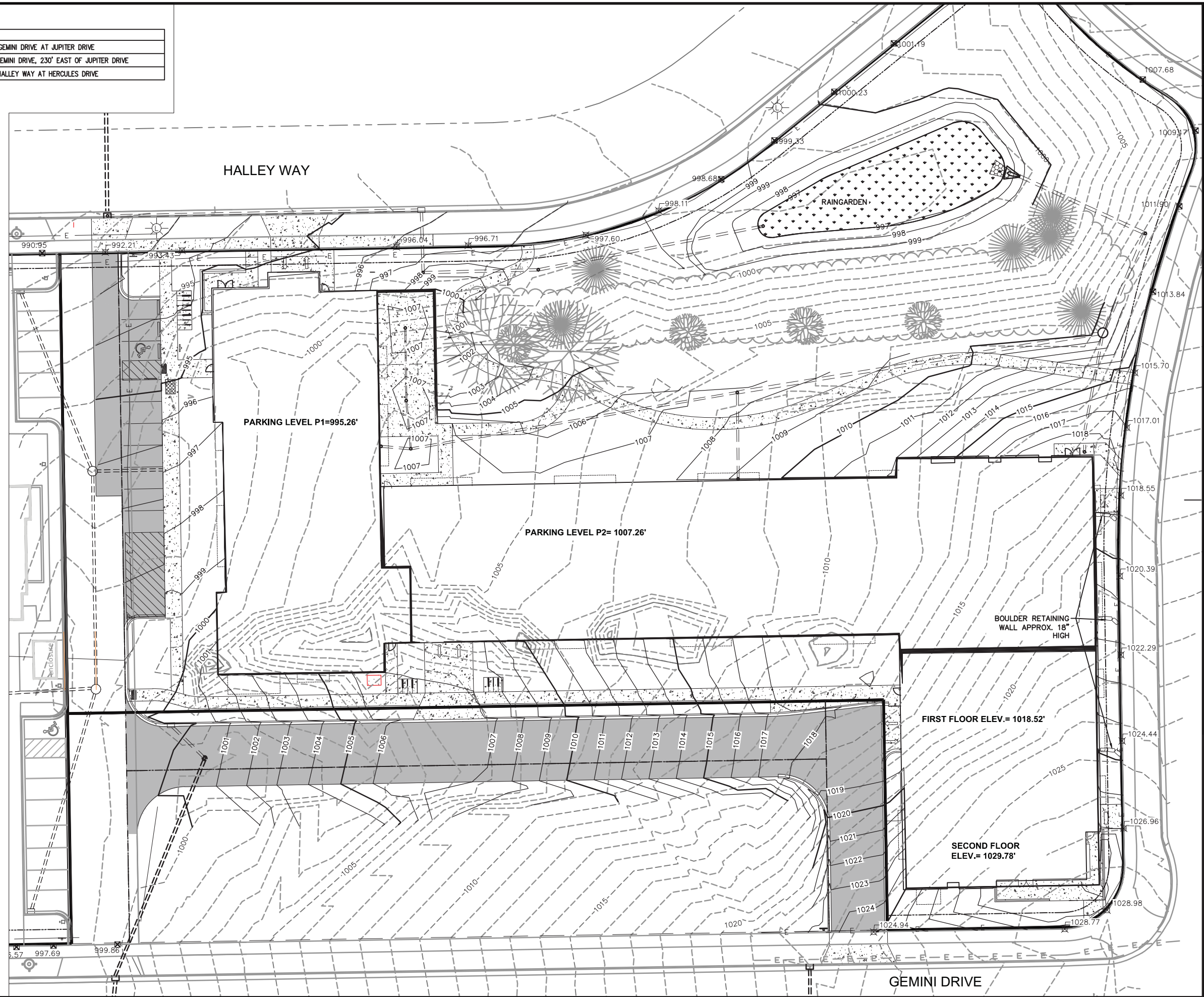
1. ALL CONSTRUCTION TO BE IN ACCORDANCE WITH ALL CITY STANDARDS AND SPECIFICATIONS.
2. CONTRACTOR SHALL CALL DIGGERS HOTLINE PRIOR TO ANY CONSTRUCTION.
3. ALL MATCHING PAVEMENT AND STORM SEWER ELEVATIONS SHALL BE VERIFIED IN THE FIELD TO ALLOW FOR PROPER DRAINAGE.
4. CONTOUR AND SPOT ELEVATIONS SHOWN ARE FINISH GRADE ELEVATIONS.
5. ALL LAWN AND PLANTING AREAS WHICH HAVE BEEN COMPACTED DUE TO CONSTRUCTION SHALL BE LOOSENED PRIOR TO ADDITION OF TOPSOIL.

GRADING LEGEND

- EXISTING CONTOUR
- PROPOSED CONTOUR

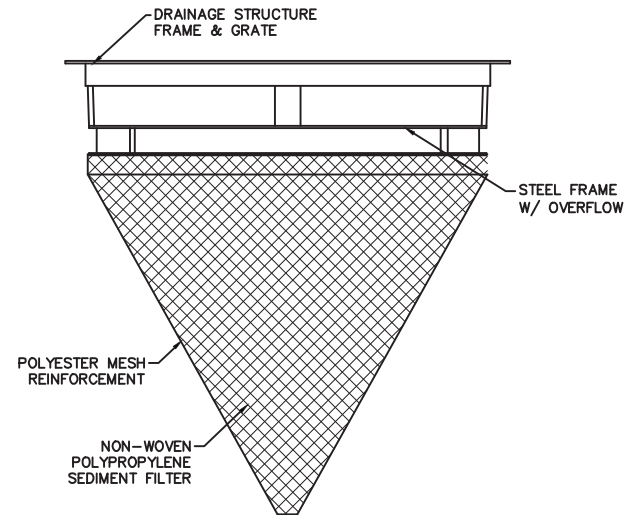


0 20 40 60
 SCALE : 1" = 20' (24 X 36)
 1" = 40' (11 X 17)



EROSION CONTROL NOTES

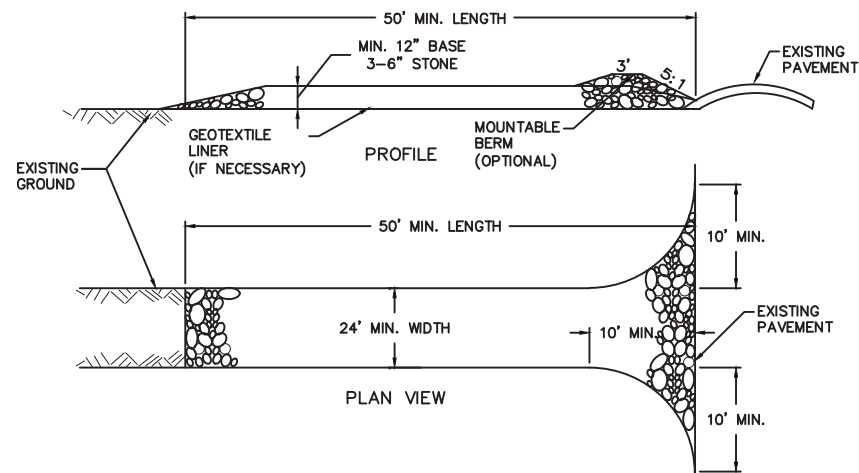
- (1) THE CONTRACTOR SHALL IMPLEMENT AND MAINTAIN EROSION CONTROL DEVICES FROM THE START OF LAND DISTURBING CONSTRUCTION ACTIVITIES UNTIL FINAL STABILIZATION OF THE CONSTRUCTION SITE.
- (2) ALL EROSION CONTROL MEASURES SHALL BE INSTALLED IN ACCORDANCE WITH THE CITY EROSION CONTROL AND STORMWATER ORDINANCE AND THE DANE COUNTY EROSION CONTROL AND STORMWATER MANAGEMENT MANUAL. THE CITY RESERVES THE RIGHT TO REQUIRE ADDITIONAL EROSION CONTROL MEASURES AS CONDITIONS WARRANT.
- (3) CLEANING. RIGHT-OF-WAY SURFACES SHALL BE THOROUGHLY CLEANED BEFORE THE END OF EACH WORKING DAY.
- (4) RESTORATION. RESTORATION SHALL BE COMPLETED AS NOTED IN THE CONSTRUCTION SCHEDULE UNLESS OTHERWISE AUTHORIZED BY THE CITY.
- (5) INSPECTION. THE CONTRACTOR SHALL INSPECT EROSION AND SEDIMENT CONTROL PRACTICES WEEKLY, AND WITHIN 24 HOURS FOLLOWING A RAINFALL OF 0.5 INCHES OR GREATER. DOCUMENTATION OF EACH INSPECTION SHALL BE ENTERED INTO THE CITY EROSION CONTROL: PERMIT TRACKING WEBSITE AND SHALL INCLUDE THE TIME, DATE AND LOCATION OF INSPECTION, THE PHASE OF LAND DISTURBANCE AT THE CONSTRUCTION SITE, PERSON CONDUCTING THE INSPECTION, ASSESSMENT OF CONTROL PRACTICES, AND A DESCRIPTION OF ANY EROSION OR SEDIMENT CONTROL MEASURE INSTALLATION.
- (6) STONE TRACKING PAD. BEFORE BEGINNING CONSTRUCTION, CONTRACTOR SHALL INSTALL A STONE TRACKING PAD AT EACH POINT WHERE VEHICLES ENTERS/EXITS THE CONSTRUCTION SITE. STONE TRACKING PADS SHOULD BE AT LEAST 24 FEET WIDE AND 50 FEET LONG, AND CONSTRUCTED OF 3-6 INCH WASHED STONE WITH A DEPTH OF AT LEAST 12 INCHES. ON SITES WITH CLAY SOILS, STONE TRACKING PADS MUST BE UNDERLAIN WITH A GEOTEXTILE LINER TO PREVENT THE STONE FROM SINKING INTO THE SOIL.
- (7) INLET PROTECTION. ALL INLETS SUBJECT TO DRAINAGE SHALL BE PROTECTED WITH WISCONSIN DOT TYPE B INLET PROTECTION. ANY DEPOSITS OF DIRT, MUD, ROCK, DEBRIS, OR OTHER MATERIAL ENTERING THE STORM SEWER SYSTEM SHALL BE PROMPTLY AND THOROUGHLY CLEANED OUT.
- (8) EROSION MAT. AREAS OR EMBANKMENTS HAVING SLOPES GREATER THAN OR EQUAL TO 4H:1V SHALL BE STABILIZED WITH WISCONSIN DOT CLASS 1, URBAN, TYPE B, EROSION MAT.
- (9) TEMPORARY EROSION CONTROL. ALL TEMPORARY EROSION AND SEDIMENT CONTROL MEASURES SHALL BE REMOVED WITHIN 30 DAYS AFTER FINAL SITE STABILIZATION IS ACHIEVED OR AFTER THE TEMPORARY MEASURES ARE NO LONGER NEEDED.
- (10) STABILIZATION. ALL DISTURBED AREAS SHALL BE SEEDED & MULCHED AS SPECIFIED WITHIN 14 WORKING DAYS OF FINAL GRADING.
- (11) TOPSOIL. A MINIMUM OF 4 INCHES OF TOPSOIL MUST BE APPLIED TO ALL AREAS TO BE SEEDED OR SODDED.
- (12) SEEDING. REFER TO LANDSCAPING PLANS FOR MIXTURE AND APPLICATION REQUIREMENTS.
- (13) STOCKPILES. ANY SOIL STOCKPILED THAT REMAINS FOR MORE THAN 30 DAYS SHALL BE COVERED OR TREATED WITH STABILIZATION PRACTICES SUCH AS TEMPORARY OR PERMANENT SEEDING AND MULCHING.



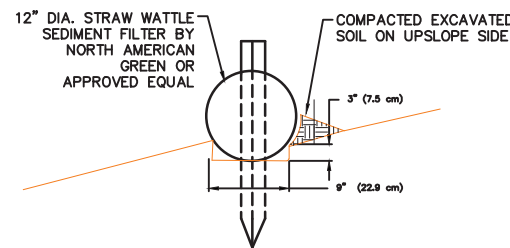
GENERAL NOTES:
 FRAME: TOP FLANGE FABRICATED FROM 1 1/4"x1 1/4"x3/8" ANGLE. BASE RIM FABRICATED FROM 1 1/2"x2"x3/8" CHANNEL. HANDLES AND SUSPENSION BRACKETS FABRICATED FROM 1 1/4"x3/4" FLAT STOCK. ALL STEEL CONFORMING TO ASTM-A36.

SEDIMENT BAG: BAG FABRICATED FROM 4 OZ./SQ.YD. NON-WOVEN POLYPROPYLENE GEOTEXTILE REINFORCED WITH POLYESTER MESH. BAG SECURED TO BASE RIM WITH A STAINLESS STEEL BAND AND LOCK.

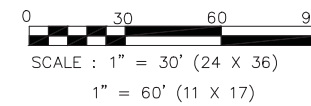
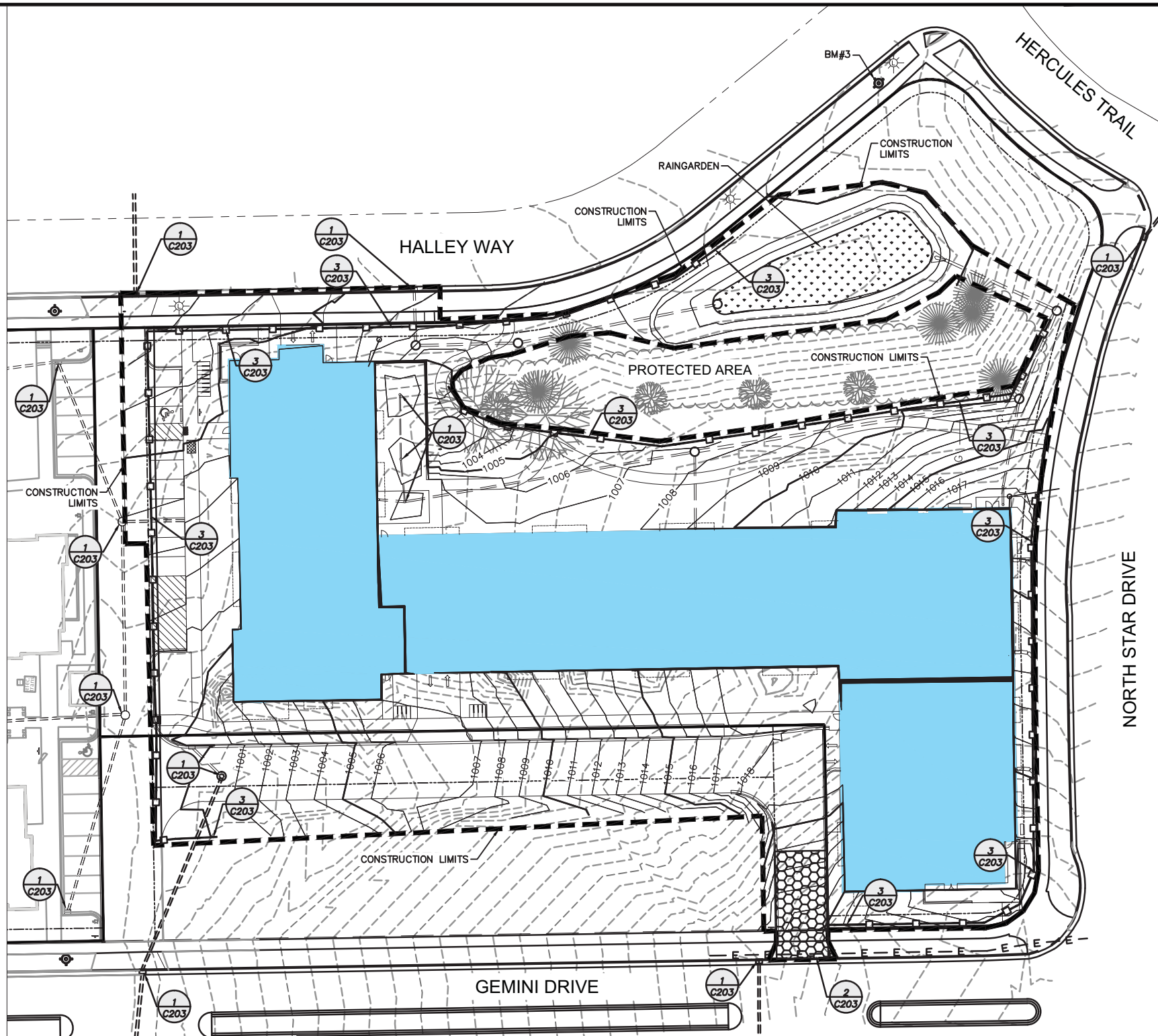
1 CATCH BASIN FILTER INSERT
NTS



2 STONE TRACKING PAD
NTS

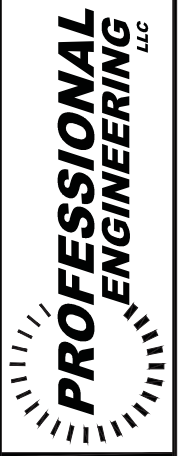


3 SEDIMENT FILTER
NTS



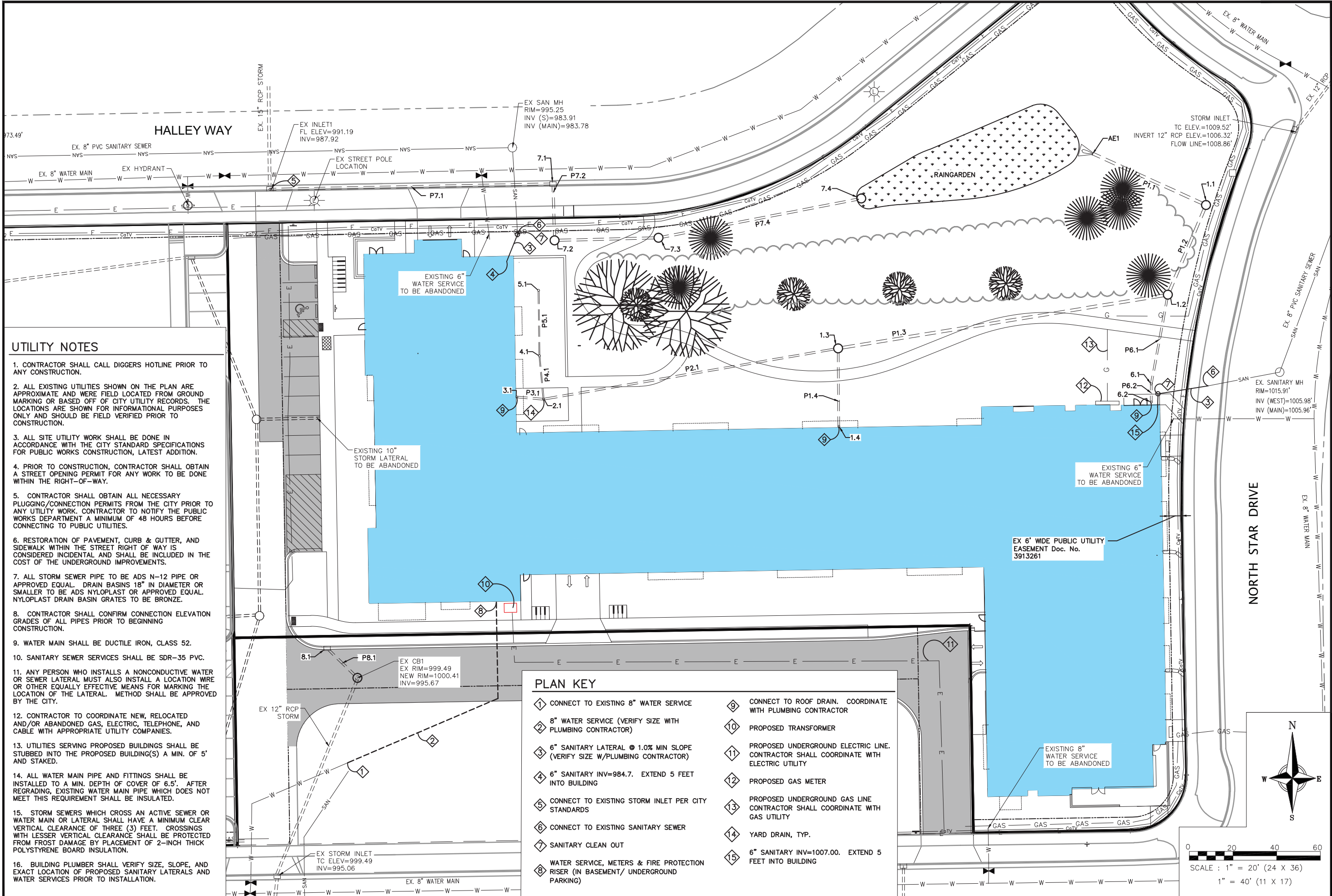
DATE	04-22-15
ISSUANCE/REVISION	PLANNING & ZONING SUBMITTAL

818 N Meadowbrook Ln
 Waunakee, WI 53597
 phone (608) 849-9378
 fax (608) 237-2129



CAPITOL VIEW AT OAK PARK
EROSION CONTROL PLAN
 5817 HALLEY WAY
 MADISON, WISCONSIN

C203



UTILITY NOTES

1. CONTRACTOR SHALL CALL DIGGERS HOTLINE PRIOR TO ANY CONSTRUCTION.
2. ALL EXISTING UTILITIES SHOWN ON THE PLAN ARE APPROXIMATE AND WERE FIELD LOCATED FROM GROUND MARKING OR BASED OFF OF CITY UTILITY RECORDS. THE LOCATIONS ARE SHOWN FOR INFORMATIONAL PURPOSES ONLY AND SHOULD BE FIELD VERIFIED PRIOR TO CONSTRUCTION.
3. ALL SITE UTILITY WORK SHALL BE DONE IN ACCORDANCE WITH THE CITY STANDARD SPECIFICATIONS FOR PUBLIC WORKS CONSTRUCTION, LATEST ADDITION.
4. PRIOR TO CONSTRUCTION, CONTRACTOR SHALL OBTAIN A STREET OPENING PERMIT FOR ANY WORK TO BE DONE WITHIN THE RIGHT-OF-WAY.
5. CONTRACTOR SHALL OBTAIN ALL NECESSARY PLUGGING/CONNECTION PERMITS FROM THE CITY PRIOR TO ANY UTILITY WORK. CONTRACTOR TO NOTIFY THE PUBLIC WORKS DEPARTMENT A MINIMUM OF 48 HOURS BEFORE CONNECTING TO PUBLIC UTILITIES.
6. RESTORATION OF PAVEMENT, CURB & GUTTER, AND SIDEWALK WITHIN THE STREET RIGHT OF WAY IS CONSIDERED INCIDENTAL AND SHALL BE INCLUDED IN THE COST OF THE UNDERGROUND IMPROVEMENTS.
7. ALL STORM SEWER PIPE TO BE ADS N-12 PIPE OR APPROVED EQUAL. DRAIN BASINS 18" IN DIAMETER OR SMALLER TO BE ADS NYLOPLAST OR APPROVED EQUAL. NYLOPLAST DRAIN BASIN GRATES TO BE BRONZE.
8. CONTRACTOR SHALL CONFIRM CONNECTION ELEVATION GRADES OF ALL PIPES PRIOR TO BEGINNING CONSTRUCTION.
9. WATER MAIN SHALL BE DUCTILE IRON, CLASS 52.
10. SANITARY SEWER SERVICES SHALL BE SDR-35 PVC.
11. ANY PERSON WHO INSTALLS A NONCONDUCTIVE WATER OR SEWER LATERAL MUST ALSO INSTALL A LOCATION WIRE OR OTHER EQUALLY EFFECTIVE MEANS FOR MARKING THE LOCATION OF THE LATERAL. METHOD SHALL BE APPROVED BY THE CITY.
12. CONTRACTOR TO COORDINATE NEW, RELOCATED AND/OR ABANDONED GAS, ELECTRIC, TELEPHONE, AND CABLE WITH APPROPRIATE UTILITY COMPANIES.
13. UTILITIES SERVING PROPOSED BUILDINGS SHALL BE STUBBED INTO THE PROPOSED BUILDING(S) A MIN. OF 5' AND STAKED.
14. ALL WATER MAIN PIPE AND FITTINGS SHALL BE INSTALLED TO A MIN. DEPTH OF COVER OF 6.5'. AFTER REGRADING, EXISTING WATER MAIN PIPE WHICH DOES NOT MEET THIS REQUIREMENT SHALL BE INSULATED.
15. STORM SEWERS WHICH CROSS AN ACTIVE SEWER OR WATER MAIN OR LATERAL SHALL HAVE A MINIMUM CLEAR VERTICAL CLEARANCE OF THREE (3) FEET. CROSSINGS WITH LESSER VERTICAL CLEARANCE SHALL BE PROTECTED FROM FROST DAMAGE BY PLACEMENT OF 2-INCH THICK POLYSTYRENE BOARD INSULATION.
16. BUILDING PLUMBER SHALL VERIFY SIZE, SLOPE, AND EXACT LOCATION OF PROPOSED SANITARY LATERALS AND WATER SERVICES PRIOR TO INSTALLATION.

PLAN KEY

- | | |
|--|---|
| ① CONNECT TO EXISTING 8" WATER SERVICE | ⑨ CONNECT TO ROOF DRAIN. COORDINATE WITH PLUMBING CONTRACTOR |
| ② 8" WATER SERVICE (VERIFY SIZE WITH PLUMBING CONTRACTOR) | ⑩ PROPOSED TRANSFORMER |
| ③ 6" SANITARY LATERAL @ 1.0% MIN SLOPE (VERIFY SIZE W/PLUMBING CONTRACTOR) | ⑪ PROPOSED UNDERGROUND ELECTRIC LINE. CONTRACTOR SHALL COORDINATE WITH ELECTRIC UTILITY |
| ④ 6" SANITARY INV=984.7. EXTEND 5 FEET INTO BUILDING | ⑫ PROPOSED GAS METER |
| ⑤ CONNECT TO EXISTING STORM INLET PER CITY STANDARDS | ⑬ PROPOSED UNDERGROUND GAS LINE. CONTRACTOR SHALL COORDINATE WITH GAS UTILITY |
| ⑥ CONNECT TO EXISTING SANITARY SEWER | ⑭ YARD DRAIN, TYP. |
| ⑦ SANITARY CLEAN OUT | ⑮ 6" SANITARY INV=1007.00. EXTEND 5 FEET INTO BUILDING |
| ⑧ WATER SERVICE, METERS & FIRE PROTECTION RISER (IN BASEMENT/ UNDERGROUND PARKING) | |



SCALE : 1" = 20' (24 X 36)
1" = 40' (11 X 17)

DATE	04-22-15
ISSUANCE/REVISION	
PLANNING & ZONING SUBMITTAL	

818 N Meadowbrook Ln
Waukegan, WI 53597
phone (808) 849-9378
fax (808) 237-2129

PROFESSIONAL ENGINEERING LLC

CAPITOL VIEW AT OAK PARK
UTILITY PLAN
5817 HALLEY WAY
MADISON, WISCONSIN

C300

STRUCTURE TABLE					
STRUCTURE NAME:	SIZE	TOP OF CASTING	PIPES IN:	PIPES OUT	CASTING:
1.1	4-FT DIA. CB	1010.00	P1.2, 15" INV IN =1001.70	P1.1, 15" INV OUT =1000.00	NEENAH R-1550
1.2	4-FT DIA. CB	1011.06	P1.3, 15" INV IN =1001.92 P6.1, 10" INV IN =1007.00	P1.2, 15" INV OUT =1001.92	NEENAH R-1550
1.3	4-FT DIA. CB	1007.28	P2.1, 10" INV IN =1002.86 P1.4, 10" INV IN =1004.85	P1.3, 15" INV OUT =1002.70	NEENAH R-1550
1.4	CONNECT TO ROOF DRAIN	1008.78		P1.4, 10" INV OUT =1005.12	CONNECT TO ROOF DRAIN
2.1	15" BASIN	1006.70	P4.1, 6" INV IN =1004.10 P3.1, 10" INV IN =1003.48	P2.1, 10" INV OUT =1003.47	15" GRATE
3.1	CONNECT TO ROOF DRAIN	1007.23		P3.1, 10" INV OUT =1003.72	CONNECT TO ROOF DRAIN
4.1	8" BASIN	1006.80	P5.1, 6" INV IN =1004.35	P4.1, 6" INV OUT =1004.34	8" GRATE
5.1	8" BASIN	1006.80		P5.1, 6" INV OUT =1004.51	8" GRATE
6.1	10" BASIN	1017.90	P6.2, 10" INV IN =1013.75	P6.1, 10" INV OUT =1011.00	10" GRATE
6.2	CONNECT TO ROOF DRAIN	1018.49		P6.2, 10" INV OUT =1014.00	CONNECT TO ROOF DRAIN
7.1	2X3-FT	995.75	P7.2, 12" INV IN =990.65	P7.1, 12" INV OUT =990.65	NEENAH R-3067
7.2	3-FT DIA. CB	998.05	P7.3, 12" INV IN =990.90	P7.2, 12" INV OUT =990.90	NEENAH R-1550
7.3	3-FT DIA. CB	998.50	P7.4, 12" INV IN =991.34	P7.3, 12" INV OUT =991.34	NEENAH R-1550
7.4	3-FT DIA. CB	997.50		P7.4, 12" INV OUT =992.31	HAALA INDUSTRIES CG36TM
8.1	2X3-FT	1000.23		P8.1, 12" INV OUT =996.95	NEENAH R-3067
AE1	12" RCP A.E.	1000.52	P1.1, 15" INV IN =999.00		-
EX CB1	EX STRUCTURE	1000.41	P8.1, 12" INV IN =996.80		ADJUST CASTING RIM HEIGHT
EX INLET1	EX STRUCTURE	992.56	P7.1, 12" INV IN =988.25		-

PIPE TABLE						
NAME	SIZE	LENGTH	SLOPE	MATERIAL	START INVERT ELEVATION	END INVERT ELEVATION
P1.1	15"	57'	1.76%	ADS N-12	1000.00'	999.00'
P1.2	15"	45'	0.50%	ADS N-12	1001.92'	1001.70'
P1.3	15"	153'	0.51%	ADS N-12	1002.70'	1001.92'
P1.4	10"	36'	0.76%	ADS N-12	1005.12'	1004.85'
P2.1	10"	137'	0.44%	ADS N-12	1003.47'	1002.86'
P3.1	10"	13'	1.98%	ADS N-12	1003.72'	1003.48'
P4.1	6"	20'	1.20%	ADS N-12	1004.34'	1004.10'
P5.1	6"	30'	0.53%	ADS N-12	1004.51'	1004.35'
P6.1	10"	42'	9.63%	ADS N-12	1011.00'	1007.00'
P6.2	10"	9'	2.99%	ADS N-12	1014.00'	1013.75'
P7.1	12"	130'	1.85%	RCP	990.65'	988.25'
P7.2	12"	26'	0.97%	ADS N-12	990.90'	990.65'
P7.3	12"	48'	0.92%	ADS N-12	991.34'	990.90'
P7.4	12"	95'	1.03%	ADS N-12	992.31'	991.34'
P8.1	12"	20'	0.76%	ADS N-12	996.95'	996.80'

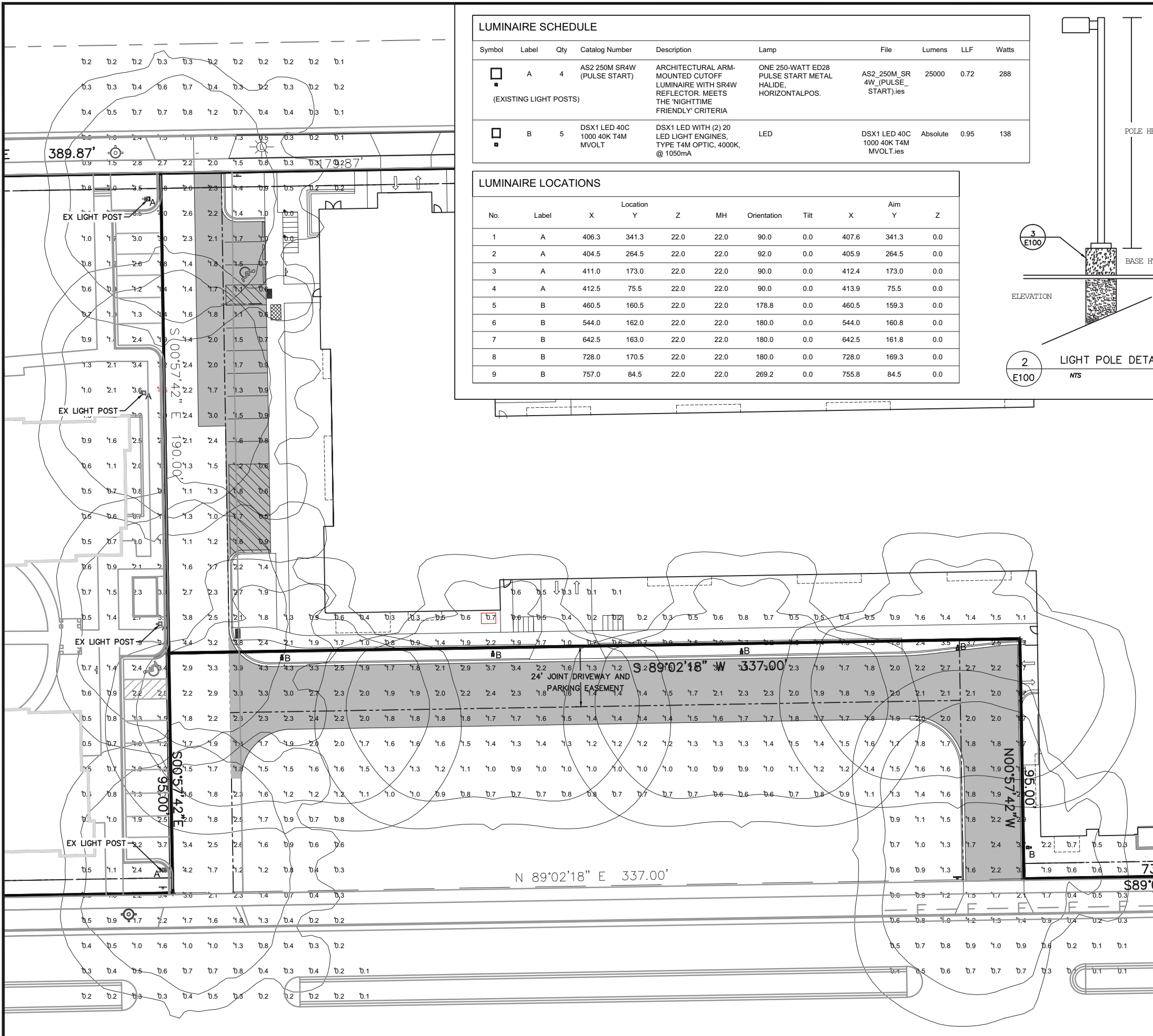
818 N Meadowbrook Ln
Waunakee, WI 53597
phone (608) 849-9378
fax (608) 237-2129



**CAPITOL VIEW AT OAK PARK
STORM SEWER SCHEDULE**
5817 HALLEY WAY
MADISON, WISCONSIN

C301

ISSUANCE/REVISION	DATE
PLANNING & ZONING SUBMITTAL	04-22-15

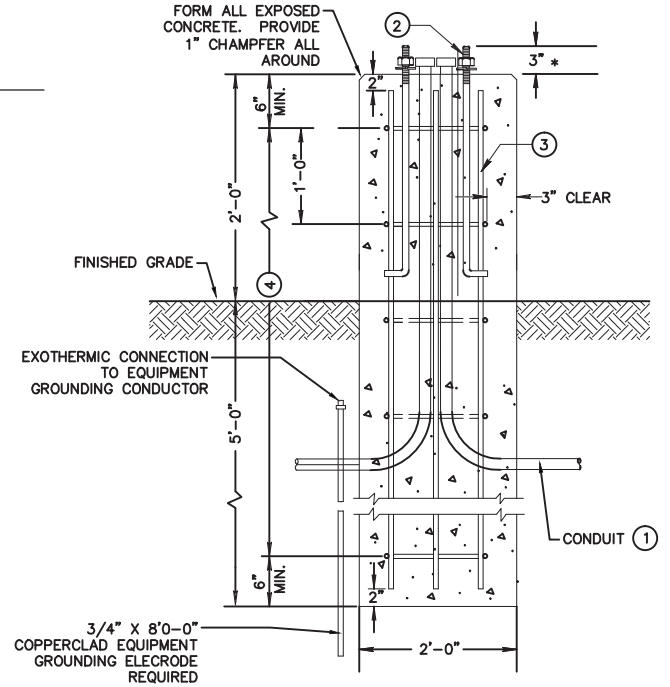
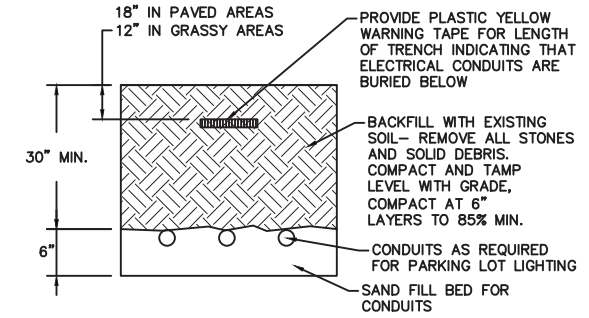
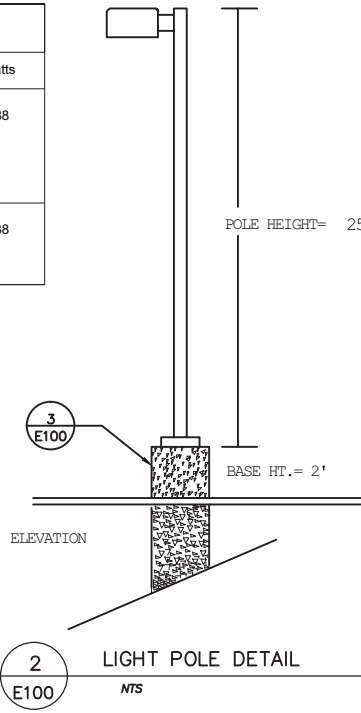


LUMINAIRE SCHEDULE

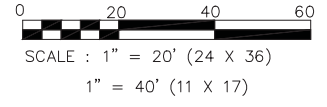
Symbol	Label	Qty	Catalog Number	Description	Lamp	File	Lumens	LLF	Watts
	A	4	AS2 250M SR4W (PULSE START)	ARCHITECTURAL ARM-MOUNTED CUTOFF LUMINAIRE WITH SR4W REFLECTOR. MEETS THE NIGHTTIME FRIENDLY CRITERIA	ONE 250-WATT ED28 PULSE START METAL HALIDE, HORIZONTAL POS.	AS2_250M_SR4W_(PULSE_START).ies	25000	0.72	288
(EXISTING LIGHT POSTS)									
	B	5	DSX1 LED 40C 1000 40K T4M MVOLT	DSX1 LED WITH (2) 20 LED LIGHT ENGINES, TYPE T4M OPTIC, 4000K, @ 1050mA	LED	DSX1 LED 40C 1000 40K T4M MVOLT.ies	Absolute	0.95	138

LUMINAIRE LOCATIONS

No.	Label	X	Y	Z	MH	Orientation	Tilt	X	Y	Z
1	A	406.3	341.3	22.0	22.0	90.0	0.0	407.6	341.3	0.0
2	A	404.5	264.5	22.0	22.0	92.0	0.0	405.9	264.5	0.0
3	A	411.0	173.0	22.0	22.0	90.0	0.0	412.4	173.0	0.0
4	A	412.5	75.5	22.0	22.0	90.0	0.0	413.9	75.5	0.0
5	B	460.5	160.5	22.0	22.0	178.8	0.0	460.5	159.3	0.0
6	B	544.0	162.0	22.0	22.0	180.0	0.0	544.0	160.8	0.0
7	B	642.5	163.0	22.0	22.0	180.0	0.0	642.5	161.8	0.0
8	B	728.0	170.5	22.0	22.0	180.0	0.0	728.0	169.3	0.0
9	B	757.0	84.5	22.0	22.0	269.2	0.0	755.8	84.5	0.0



- 1 THE MINIMUM DEPTH OF CONDUIT EXITING THE CONCRETE BASE AND INSTALLED BELOW THE TRAVELED WAY SHALL BE 24 INCHES. THE MINIMUM DEPTH OF CONDUIT EXITING THE CONCRETE BASE THAT IS NOT INSTALLED BELOW THE TRAVELED WAY SHALL BE 18 INCHES. THE MAXIMUM DEPTH OF ALL CONDUIT SHALL BE 36 INCHES EXCEPT WITH WRITTEN APPROVAL BY THE ENGINEER.
- 2 ANCHOR BOLTS PER MANUFACTURER'S INSTRUCTIONS
- 3 (6) NO.4 X 4'-8" BAR STEEL REINFORCEMENT.
- 4 (5) NO.4 X 5'-1" BAR STEEL REINFORCEMENT @ 1'-0" C-C.



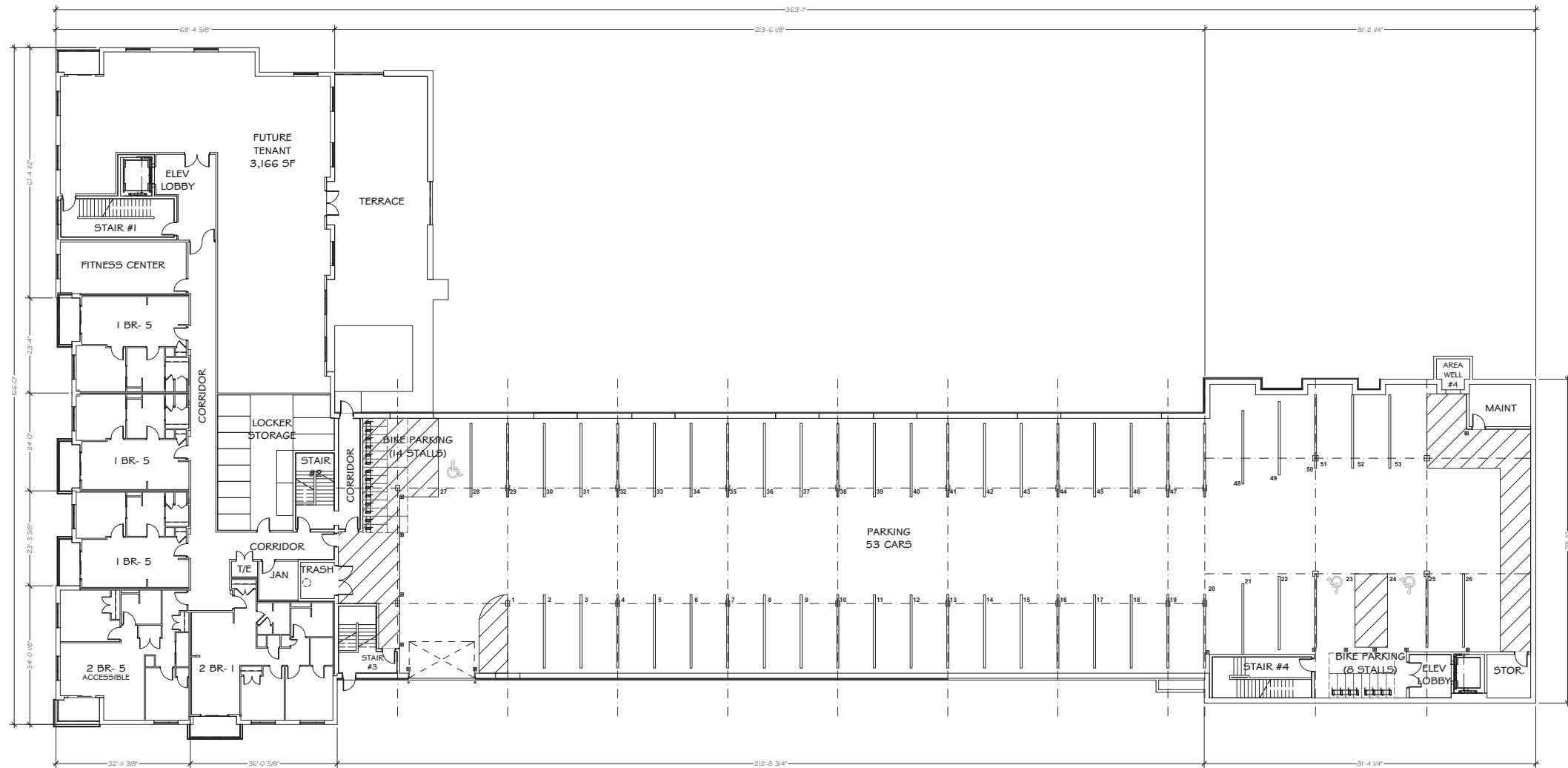
DATE	ISSUANCE/REVISION
04-22-15 <td>PLANNING & ZONING SUBMITTAL </td>	PLANNING & ZONING SUBMITTAL

818 N Meadowbrook Ln
 Waunakee, WI 53997
 phone (608) 849-9378
 fax (608) 237-2129

PROFESSIONAL ENGINEERING LLC

CAPITOL VIEW AT OAK PARK
LIGHTING PLAN
 5817 HALLEY WAY
 MADISON, WISCONSIN

E100



PARKING LEVEL TWO

SCALE: 1/16" = 1'-0"

PRELIMINARY PLANS NOT FOR CONSTRUCTION

ADCI Architectural Design Consultants, Inc.
 30 Wisconsin Dells Parkway • P.O. Box 580
 Lake Delton, WI 53940
 Phone: (608) 254-6181 Fax: (608) 254-2139



Wisconsin
 Capitol View at Oak Park
 Madison
OVERALL P2 PLAN

Drawn By: D. Duesel
 Architect: Mark Kruser
 Date: 05/14/2015
 Scale: AS NOTED
 Job Number: 12-100

SHEET NUMBER
A2.0

REVISED MAY 15, 2015



**Architectural Design
Consultants, Inc.**

VIEW ALONG NORTH STAR DRIVE

Capitol View at Oak Park, Madison, WI

November 4, 2013

This document contains confidential or proprietary information of Architectural Design Consultants, Inc. Neither this document nor the information herein is to be reproduced, distributed, used or disclosed either in whole or in part except as specifically authorized by Architectural Design Consultants, Inc.



**Architectural Design
Consultants, Inc.**

ENTRY AT NORTH STAR DRIVE

Capitol View at Oak Park, Madison, WI

November 4, 2013

This document contains confidential or proprietary information of Architectural Design Consultants, Inc. Neither this document nor the information herein is to be reproduced, distributed, used or disclosed either in whole or in part except as specifically authorized by Architectural Design Consultants, Inc.



**Architectural Design
Consultants, Inc.**

South View

Capitol View at Oak Park, Madison, WI

April 16, 2015

This document contains confidential or proprietary information of Architectural Design Consultants, Inc. Neither this document nor the information herein is to be reproduced, distributed, used or disclosed either in whole or in part except as specifically authorized by Architectural Design Consultants, Inc.



**Architectural Design
Consultants, Inc.**

ENTRY AT HALLEY WAY

Capitol View at Oak Park, Madison, WI

April 16, 2015

This document contains confidential or proprietary information of Architectural Design Consultants, Inc. Neither this document nor the information herein is to be reproduced, distributed, used or disclosed either in whole or in part except as specifically authorized by Architectural Design Consultants, Inc.